



Dillin Engineered Systems Corp.

Creating Optimal Solutions for Product Flow

SIDE GRIP METERING BELTS

Standard or QuickSet™

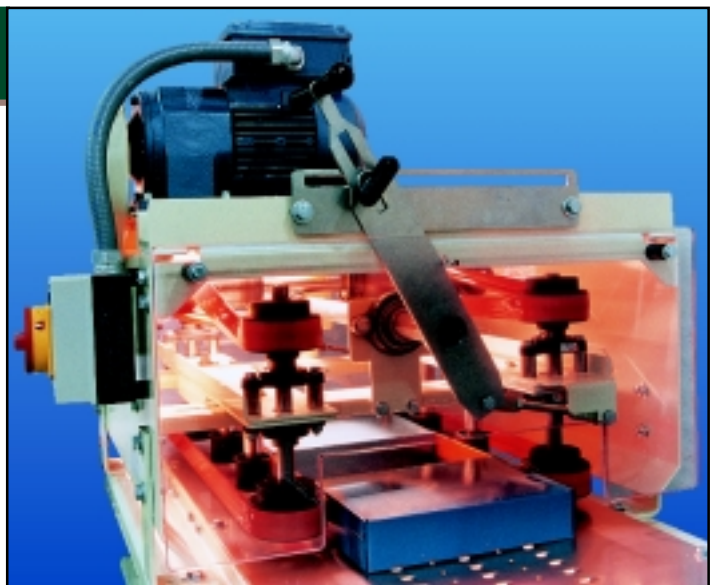


VERTICAL "S" & "C" STYLE

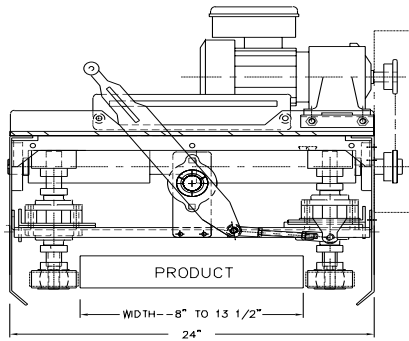
- Controls carton speed in decline chute.
- Urethane belts and/or beaded guide securely grips sides of product.
- Infeed from AIRDECK™ with Horizontal Metering Belt.
- Discharge directly into Case Packer.

HORIZONTAL with QuickSet™

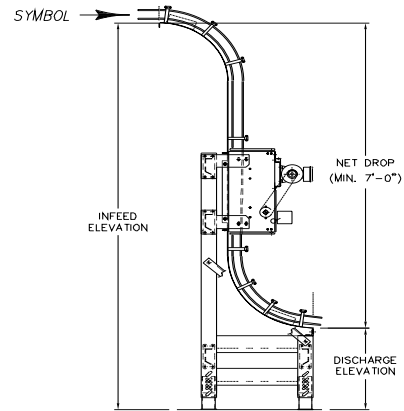
- Manually adjusts Horizontal or Vertical Metering Belts in less than 5 seconds!
- Retrofits easily to existing Metering Belts.
- Through strategic placement becomes drop-out area for misaligned packages.



Corporate Office: 8030 Broadstone Road • Perrysburg, Ohio 43551 • Phone: 419-666-6789 • Fax: 419-666-4020
E-Mail: marketing@dillin.com • Website: www.dillin.com



TYPICAL CROSS SECTION
QuickSet™ HORIZONTAL METERING BELT



"S" STYLE VERTICAL METERING BELT

HORIZONTAL SIDE GRIP METERING BELT SPECIFICATIONS

CONSTRUCTIONAL MATERIALS

Design 10 gauge formed channel
Clean design features
Slave Drive Belts Flat 1 1/4" Eagle "A" Section Twin Urethane Belts
Side Grip Belts Flat 1 1/4" Eagle "A" Section Twin Urethane Belts

MATERIAL/FINISH

Finish Painted
Optional Finish To customer specifications

DIMENSIONS/WEIGHT

Width 24"
Length 26 1/2"
Height 22 3/16"
Weight 125 lbs.
Optional Width, Height & Length To customer specifications

SPEED

Normal Range 60-250 FPM

CAPACITY

Transport Approximately 3 lbs. maximum
Subject to product testing.

DRIVE SYSTEM

Drive Eurodrive gearmotor, 1/2 HP
Drive Shafts Carbon steel
Sprockets Hardened Tooth

UTILITIES

Motor Power Requirement 230/460V—60 Hz—3 PH
Electrical Field Devices 24 VDC

FIELD DEVICES

Electrical Guard Door Sensors (Schmersal)

ADJUSTABILITY

Width Dial or Single Control Arm Adjuster
Normal Product Range 8-13 1/2" product width;
3/4" - 3 1/2" product height

SAFETY EQUIPMENT

Guarding (A) Drive assembly guard door, 3/8" Lexan® with guard door sensor
(B) Drive chain guarding, 2 piece formed steel

SKIDDING / SHIPPING

Skidding Units are pre-mounted to conveyor or skidded

MAINTENANCE

Regular Maintenance Lubricate drive chain periodically.
No other lubrication required under normal operation.
See Owners Manual for periodic inspection
Spare Parts Readily available

TYPICAL INTERFACE EQUIPMENT

Equipment AIR DECK™, Table Top Chain

VERTICAL SIDE GRIP METERING BELT "C" & "S" STYLES

EXCEPTIONS TO HORIZONTAL SPECIFICATIONS

Side Guide Rails Adjustable, stainless steel,
3/8" round rod with brass bar lock
Overhead Guide Rails Adjustable, stainless steel,
3/8" round rod with brass lock

CONVEYOR BED

Gravity Chute 14 gauge stainless steel slider bed

DIMENSIONS / WEIGHT

Standard 90° Chute Radius 3'-0"
Discharge Elevation To suit
Minimum Net Drop 8'-0"
Footprint Width 2'-2"
Footprint Length 3'-9"
Overall Height Infeed elevation plus 6"
Weight 300 lbs.
Optional Width, Height & Length To customer specifications

SUPPORTS

Floor Adjustable, formed channel
Optional Floor Supports Clean design features

Copyright 2000 Dillin Engineered Systems Corp.

**CONSULT DILLIN ENGINEERED SYSTEMS CORP.
FOR SYSTEMS DESIGN**

3/00

Photographs used for promotional purposes may not always depict safety labeling normally found on Dillin components.