



Dillin Engineered Systems Corp.

Creating Optimal Solutions for Product Flow

## CASE LIFT

# *Continuous Motion Automatic Infeed • Heavy Duty*



### "S" STYLE

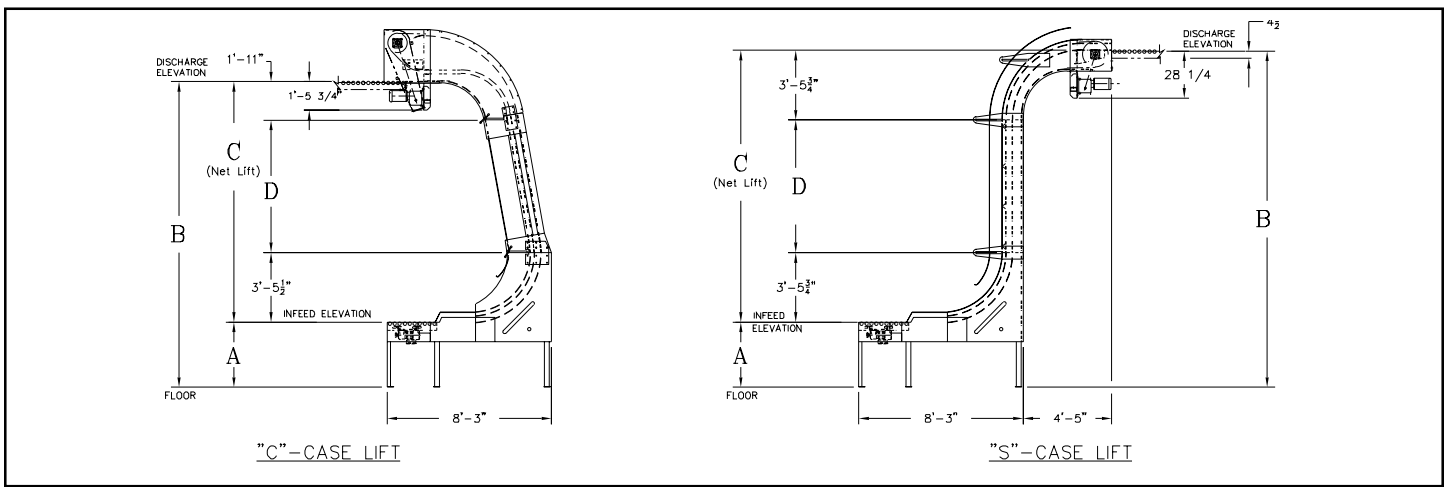
- Transports cases by use of roller chain and flight bars.
- Controlled product infeed with fool proof mechanically timed release.
- Adjustable for variations in case length, width and height.
- Optional open flap detection. Also detects over-sized cases due to misorientation.

### SYNCHRONIZED CASE CONTROL

- Saves valuable floor space.
- Simple to operate. . . no electronic controls required.
- Reliable, time proven design. . .original units still in use after 20 years.



Corporate Office: 8030 Broadstone Road • Perrysburg, Ohio 43551 • Phone: 419-666-6789 • Fax: 419-666-4020  
E-Mail: [marketing@dillin.com](mailto:marketing@dillin.com) • Website: [www.dillin.com](http://www.dillin.com)



## “C” & “S” STYLE CASE LIFT SPECIFICATIONS

### CONSTRUCTION MATERIALS

Design	7 gauge steel, welded frame, Clean design features
Chain	3" pitch, heavy duty with carrier rollers
Chain Guides	Mild steel
Conveyor Chain Sprockets	Hardened teeth
Idler Pulley	Molded urethane
Shafting	Carbon steel
Flight Bar	11/2" square tubular steel on 36" centers
Optional Flight Bar Spacing	To Customer Specifications

### MATERIAL/FINISH

Finish ..... Painted, air dry enamel

### GUIDES

Infeed Guide ..... Heavy duty, adjustable, 3/8" flat bar

### INDEXING DEVICE

Reciprocating cam ..... Slave driven from  
Case Lift tail shaft

### CONVEYOR BED

Infeed ..... 2'-6" long XenoROL® model XR48-3 with drive  
Case Lift Bed (a) Infeed—2" diameter carbon  
steel rollers on 3" centers, slave  
driven from Case Lift tail shaft  
(b) Slider—7 gauge carbon steel

### DIMENSIONS/WEIGHT

Infeed/Discharge Elevation ..... To suit  
Minimum Net Lift ..... 7'- 6"  
Footprint Width ..... (a) 18" Case Lift—3'-1"  
(b) 24" Case Lift—3'- 7"  
Footprint Length(s) ..... 8'- 3"  
Includes 2'-6" long XenoROL®  
Overall Height—"C" Style ..... Discharge elevation  
plus 3'- 0"  
Overall Height—"S" Style ..... Discharge elevation  
plus product height  
Weight ..... 2400 lbs.

### SUPPORTS

Floor ..... 3" square tubing

### SPEED

Normal Range ..... 15 cases per minute

### CAPACITY

Lifting ..... Maximum 50 lbs. per case

### DRIVE SYSTEM

Drive ..... Reliance motor, Dodge, Tigear® reducer  
(a) Case Lift—45 FPM, Minimum 3/4 HP  
(b) XenoROL® infeed—60 FPM, 1/2 HP  
Torque Limiter ..... Dodge Torque-Tamer®  
Drive Shaft ..... Carbon steel  
Sprockets ..... Hardened teeth

### UTILITIES

Motor Power Requirement ..... 230/460V—60 Hz—3 PH  
Electrical Field Devices ..... 24 VDC

### FIELD DEVICES

Open Flap, Misaligned Case Detection ..... Photoeye

### ADJUSTABILITY

Product Size ..... (a) 18" Case Lift—16" maximum  
case width  
(b) 24" Case Lift—22" maximum  
case width

NOTE: The Case Lift handles a wide variety of case sizes.

Contact Dillin Engineered Systems Corp. with case dimensions and weight for systems analysis.

### SAFETY EQUIPMENT

Guarding ..... (a) Drive chain guarding, 2 piece  
formed steel  
(b) Back panel, 7 gauge steel  
(c) Reciprocating cam guarding,  
formed steel

### SHIPPING

Shipping ..... Exclusive use Air-Ride tractors and trailers  
at competitive freight rates. May be partially disassembled.

### MAINTENANCE

Regular Maintenance ..... Lubricate drive chain and  
conveyor chain periodically. No other lubrication  
required under normal operation. See owners manual  
for periodic inspection and adjustment.

### TYPICAL INTERFACE EQUIPMENT

Equipment ..... Belt or Roller Conveyor

NOTE: The Case Lift is sold as an independent, stand-alone unit, without controls.

Copyright 2000 Dillin Engineered Systems Corp.

**CONSULT DILLIN ENGINEERED SYSTEMS CORP.  
FOR SYSTEMS DESIGN**

Specifications subject to change without notice.

2/00

Photographs used for promotional purposes may not always depict safety labeling normally found on Dillin components.