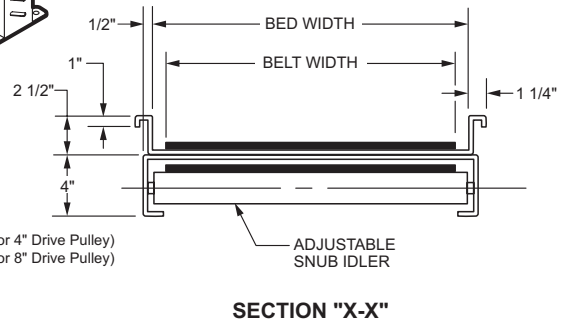
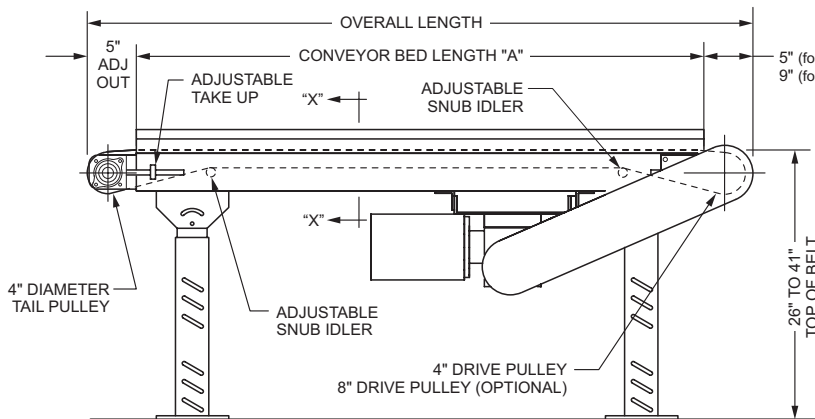
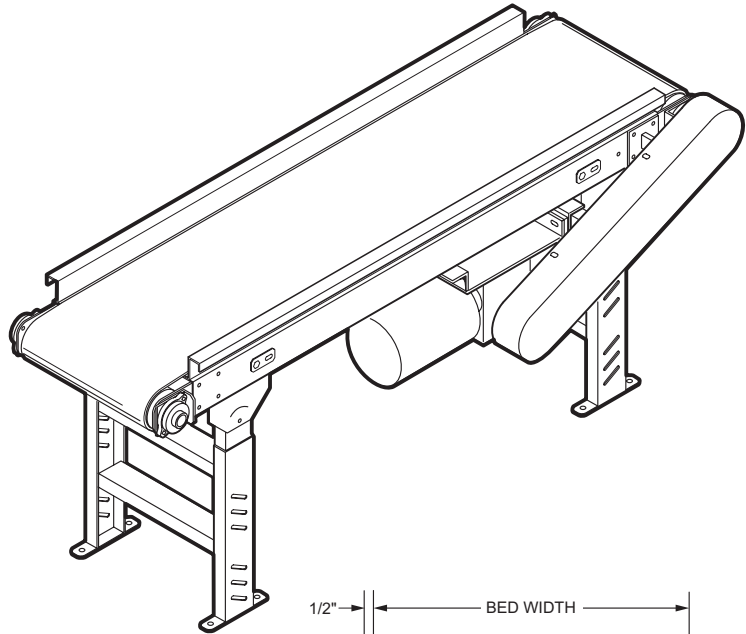


BELT CONVEYOR TROUGH BED MODEL TSB250

Applications

- Conveys Boxes, Bags, Cases, and Loose Parts
- Built in guard rails allow overhead Conveying



LOAD CAPACITY CHART	
Horizontal Conveyor Slider Bed @ 60 FPM	
HP	TOTAL LOAD
1/2	435 lbs.
3/4	650 lbs.
1	810 lbs.

Standard Specifications:

Belt - Black PVC-120 FS x FS with clipper lacing.

Belt Widths - 6 in., 8 in., 10 in., 12 in., 14 in., 16 in., 18 in., 20 in., 24 in., and 30 in. wide black solid woven PVC belt.

Tail Pulley - 4 in. dia. crowned with 1 3/16 in. dia. shaft.

Drive Pulley - 4 in. dia. and 8 in. dia. crowned and fully lagged. 4 in. dia. pulley with 1 3/16 in. dia. shaft, 8 in. dia. pulley with 1 7/16 in. dia. shaft.

Return Rollers - 2 in. dia.

Snub Rollers - 2 in. Dia.

Bed - one piece 11 ga. formed steel with 2 1/2 in. high vertical sides. Standard sections are 5 and 10 feet long and bolted together with floor supports and splice plates.

Floor Supports - Adjustable from 28 1/2 in. to 40 1/2 in. from floor to top of belt. One support supplied at each end of conveyor and at each bed joint.

Take-Up - 6 in. long screws located at tail pulley to provide belt tension.

Motor - 1/2 H.P. 230/460/3/60 TEFC motor.

Speed Reducer - C-Face mounted heavy duty worm gear reducer.

Bearings - Sealed-prelubricated with cast iron housings.

Belt Speed - 60 FPM constant.

Capacity - Maximum load per linear foot of conveyor - 75 lbs. Not to exceed Load Capacity Chart.

Conveyor Bed Length "A"	Overall Length	Drive Pulley Diameter	Belt Width	6"	8"	10"	12"	14"	16"	18"	20"	24"	30"
			Bed Width	7"	9"	11"	13"	15"	17"	19"	21"	25"	31"
			Bed	11Gauge Formed Steel Bed									
5'	5'10"	4"	Weight (lbs.)	250	270	280	290	300	320	335	360	380	410
10'	10'10"	4"		300	320	330	350	360	400	415	430	450	480
15'	15'10"	4"		370	390	410	425	440	500	520	535	570	605
20'	20'10"	4"		420	445	470	490	520	540	558	580	625	695
25'	25'10"	4"		490	520	550	570	600	630	650	680	735	820
30'	30'10"	4"		535	570	600	630	660	700	730	755	820	920
35'	35'10"	4"		600	621	655	700	735	770	810	850	920	1030
40'	40'10"	4"		655	695	735	780	815	850	890	935	1020	1140
45'	45'10"	4"		710	750	760	835	890	930	980	1020	1120	1250
50'	50'10"	4"		775	825	875	920	970	1020	1070	1120	1220	1370
55'	56'2"	8"	Weight (lbs.)	820	880	930	930	1045	1100	1160	1215	1320	1480
60'	61'2"	8"		890	950	1010	1070	1125	1180	1248	3000	1420	1590
65'	66'2"	8"		940	1080	1070	1130	1198	1260	1325	1390	1520	1705
70'	71'2"	8"		1020	839	1150	1220	1280	1350	1420	1490	1620	1825
75'	76'2"	8"		1060	1130	1205	1280	1360	1430	1504	1575	1720	1935
80'	81'2"	8"		1130	1205	1280	1360	1430	2010	1590	1665	1818	2048
85'	86'2"	8"		1180	1255	1340	1420	1507	1590	1670	1752	1920	2155
90'	91'2"	8"		1150	1330	1415	1500	1590	1670	1755	1840	2035	2325
95'	96'2"	8"		1305	1380	1470	1560	1660	1750	1835	1925	2135	2433
100'	101'2"	8"		1360	1460	1550	1640	1733	1830	1920	2015	2204	2485

How To Order

Model: XXXX-XX-XXXX-XXX-XXX-XXX-XXX-XX-XXX-XX

Model / Series:
(SB400) Slider Bed
(SB650) Slider Bed
(TSB250) Slider Bed

Belt widths:
(06) = 6", (08) = 8",
(10) = 10", (12) = 12",
(14) = 14", (16) = 16",
(18) = 18", (20) = 20",
(24) = 24", (30) = 30"

Belt Type:
(STD) = Standard per catalog specifications
(SPE) = Special requirements will need to be specified at the time of estimating

Drive Pulley Diameter:
(04) = 4" dia. (std. For SB 400, TSB250)
(06) = 6" dia. (Std. For SB650)
(08) = 8" dia.

Overall conveyor length:
Refer to length selection table
(ex: (0510) = 5'-10")

Supports:
(Top of Bed / Top of Roller height)
(STD) = Standard supports 28 1/2" to 40 1/2"
(NSP) = No supports required
** If not standard please use top of bed / top of roller height dimensionally (ex: (12) = 1'-0" or (046) = 3'-10")

Paint color
(01) Blue, (02) Crème, (03) Safety Yellow,
(04) Safety Orange, (05) Med. Metallic Grey,
(06) White, (07) Dark Blue

Drive position:
(DLU) Left Hand, Mounted Low (Included in std. prc)
(DRU) Right Hand, Mounted Low (Included in std. prc)
(DLH) Left Hand, Mounted High (Add to std. price)
(DRH) Right Hand, Mounted High (Add to std. price)
(DLC) Left Hand, Center Mount (Add to std. price)
(DRC) Right Hand, Center Mount (Add to std. price)

Denotes horse power requirements:
(05) 1/2 HP (Included in Standard pricing)
(75) 3/4 HP (Add to std. price)
(10) 1 HP (Add to std. price)
(15) 1 1/2 HP (Add to std. price)

Denotes F.P.M. (Feet Per Minute) requirements. Std. 60 F.P.M.
(Selection from 30 F.P.M. to 200 F.P.M. in increments of 10 F.P.M.)

Guiding:
(NGS) = No guides required
(STD) = Formed guides
** For special guiding please refer to guide catalog supplement for part number)

How To Order

Optional Equipment:

Belt - Neoprene friction surface (white or black); Neoprene with smooth top cover (white or black); Black ruff top or red Neoprene. Special belts on application.

Bed - Higher than 2 1/2 in. vertical sides, to 12 in. maximum.

Floor Supports - Lower or higher than standard. Castered supports with 4 in. dia. or 6 in dia. rigid or swivel caster.

Ceiling Hangers - Threaded rods 8 feet long with locking nuts and mounting hardware. Other lengths are available.

Center Drive - Mounted below conveyor bed section. Can be placed anywhere in conveyor length.

Side Mounted Drive - End drive mounted to side of conveyor section. Specify side.

Overhead Drive - End drive mounted above conveyor. Specify clearance required.

Auxiliary Take-Up - Mounted below conveyor bed section. Can be placed anywhere in conveyor length.

Motor - Single phase, totally enclosed, explosion proof, etc. Other H.P. are available.

Bearings - Regreasable cast iron.

Belt Speed - Constant and variable belt speeds available.

Electrical Controls - Magnetic starters, push button stations, manual one direction and reversing drum switches and others.

Gravity Conveyor Brackets - Adjustable bracket with 1 3/8 in. dia. pop-out roller for attaching wheel or roller conveyor.

Nose-Over - Adjustable single or double nose-over provides smooth transfer from incline to horizontal.