

CDLR Conveyor

Dillin Automation
S Y S T E M S C O R P

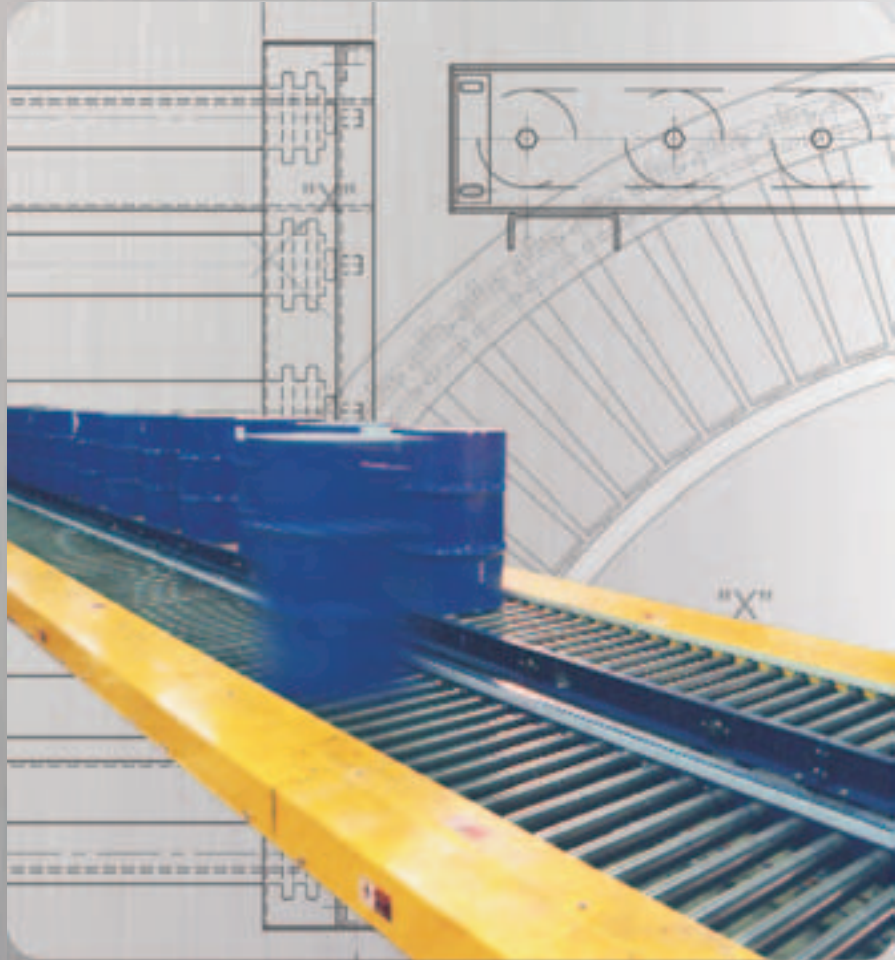


Table of Contents

Corporate Profile	2
CDLR 202.....	3
CDC 202.....	5
CDLR 251.....	7
CDC 251.....	9
CDLR 267.....	11
CDC 267.....	13
Heavy Duty Chain Transfer.....	15

Dillin Automation Systems

“We Solve your Productivity Puzzle”

With its subsidiaries: Dillin Engineered Systems, Dillin Control Systems and Dillin Capping Equipment, DAS offers a wide variety of products and capabilities which can be custom tailored to solve your specific packaging line productivity problems.

DILLIN AUTOMATION SYSTEMS specializes in Accumulation and Conveying Technology, System Integration, Controls and Panel Building and Capping and Closure Solutions.

With a combined 60 plus years of experience, our Solution Proving Team can assist you with the most basic of applications or the “Packaging Line of Your Future”. . . today.

DAS is a member of PMMI and specializes in package handling to include unwrapped food, cartons, cups, bag and pouches, caps, PET containers, trays, cases and pallets.

Our technology pedigree includes the following patents: ROE-LIFT[®] Over-The-Top[®] Vertical Accumulators, AIR DECK[®], QuickSet[®] Guides and Changeover System, Rwave[®] Transfer, and “Soft-Touch”[®] Low Line Pressure Accumulation.

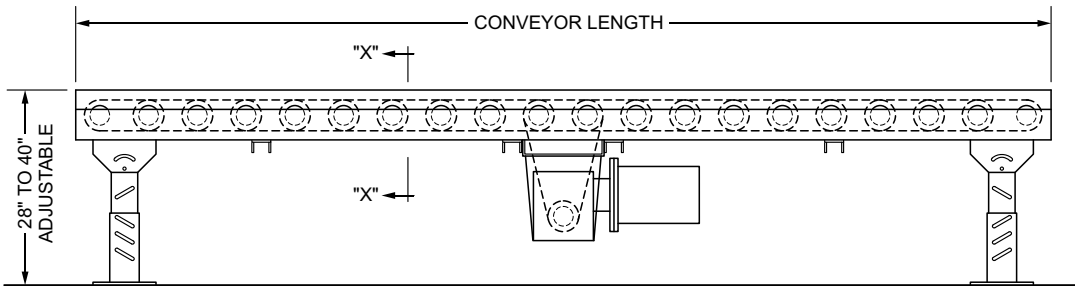
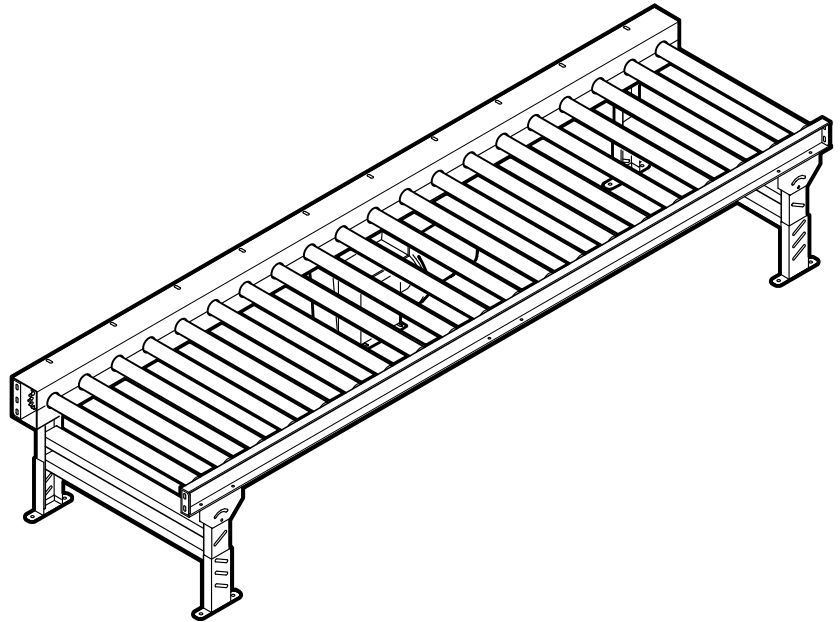
Our knowledgeable sales persons, applications engineers, design engineers, project managers and highly qualified production technicians have a common goal . . . to help you, our valued client, take the puzzle out of your productivity challenges. We will do anything in our power to get you the solution you need and then stick with you in the years to come. . . because that’s how we both succeed!



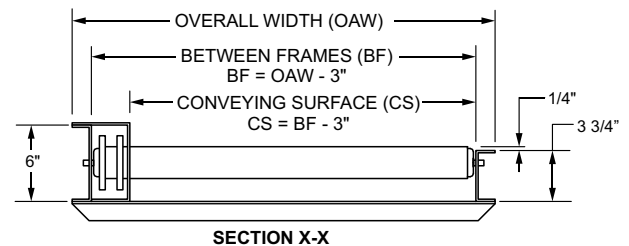
CHAIN DRIVEN LIVE ROLLER CONVEYOR MODEL CDLR202

Applications

- Wash Down Operations
- Oily Condition
- Positive Drive - No Belt Slippage



LOAD CAPACITY CHART	
Conveyor Speed 60 FPM	
HP	TOTAL LOAD
1/2	1625 lbs.
3/4	2375 lbs.
1	3025 lbs.
1 1/2	3900 lbs.
2	4750 lbs.



Standard Specifications:

Drive Chain - No. 40 roller chain on 4 in., 6 in. and 8 in. roller centers. No. 50 roller chain on 12 in. roller centers.

Bed - Conveying surface width 13 in., 15 in., 17 in., 19 in., 21 in., 23 in., 25 in., 29 in., 31 in., 35 in. and 37 in. Frame construction is 3 3/4 in. x 1 1/2 in. x 11 ga. painted formed steel channel on one side, 6 in. x 1 1/2 in. x 11 ga. painted formed steel channel on chain drive side. Frame is bolted together with 11 ga. formed channels. Sections are bolted together with butt couplings and floor supports.

Tread Rollers - 2 in. dia. x 12 ga. steel with #40 or #50 sprocket welded to roller tube, 7/16 in. hex shaft. Rollers spaced on 4 in., 6 in., 8 in. and 12 in. centers. Rollers are roller to roller driven.

Center Drive - Mounted underneath conveyor, center of section.

Floor Supports - Adjustable 28 in. to 40 in. from floor to top of rollers. One support supplied at each end of conveyor and at each bed joint.

Chain Guard - Lower chain guard is mounted on bottom of roller frame and upper chain guard is mounted above roller frame to totally enclose drive chain.

Motor - 1/2 H.P. 230/460/3/60 open motor.

Speed Reducer - C-Face mounted heavy duty worm gear reducer.

Roller Speed - 60 FPM constant.

Capacity - Maximum load 150 lbs. per foot; maximum unit load 500 lbs. Not to exceed Load Capacity Chart.

Optional Equipment:

Floor Supports - Lower or higher supports are available. Minimum elevation 15 in. from floor to top of roller.

Ceiling Hangers - Threaded rods 8 feet long with locking nuts and mounting hardware. Other lengths are available.

Side Mounted Drive - Drive mounted to side of conveyor section. Minimum elevation - 6" from floor to top of roller. Specify side.

Roller Set Low - Tread rollers mounted low in 6 in. x 11 ga. painted formed steel channel to form 2 in. high guard rails.

Motor - Single phase, totally enclosed, explosion proof, etc. Other H.P. are available.

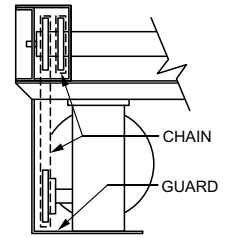
Roller Speed - Constant and variable roller speeds available.

Electrical Controls - Magnetic starters, push button stations, manual one direction and reversing drum switches and others.

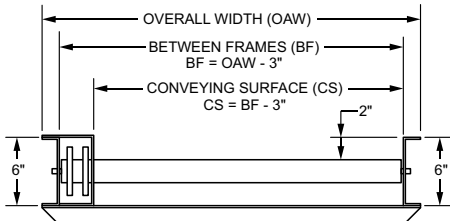
Guard Rails - Adjustable channel, continuous channel, or solid steel guard rails available.

CDLR - Can be slave driven

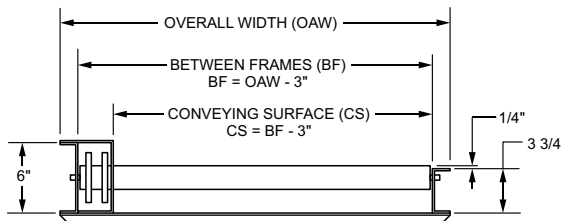
Conveyor Length Size "A"	Between Frame Width	16"	18"	20"	22"	24"	26"	28"	32"	34"	38"	40"
	Overall Frame Width	19"	21"	23"	25"	27"	29"	31"	35"	37"	41"	43"
	Conveying Surface	13"	15"	17"	19"	21"	23"	25"	29"	31"	35"	37"
5'	Weight (lbs.) Based on 4" Rollers Centers	381	393	406	418	431	444	454	477	490	507	519
10'		517	526	557	576	597	618	633	671	792	718	737
15'		675	692	740	759	789	819	840	894	928	960	967
20'		811	825	883	917	955	993	1019	1088	1126	1171	1205
25'		969	991	1058	1100	1147	1194	1226	1311	1358	1413	1455
30'		1105	1124	1209	1258	1313	1368	1405	1505	1560	1624	1673
40'		1399	1423	1535	1599	1671	1743	1791	1922	1994	2077	2139
50'		1693	1722	1861	1940	2029	2118	2177	2339	2428	2530	2609
60'		1987	2021	2187	2280	2387	2493	2563	2756	2862	2983	3070
70'		2281	2320	2513	2622	2745	2868	2949	3173	3296	3436	3545
80'		2575	2619	2839	2963	3103	3243	3335	3590	3730	3889	4013
90'		2869	2918	3165	3304	3461	3618	3721	4007	4164	4342	4481
100'	3163	3217	3491	3645	3819	3993	4107	4424	4598	4795	4949	



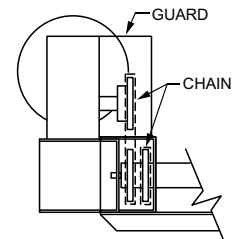
UNDER HUNG DRIVE (STANDARD)



SET LOW (OPTIONAL)



SET HIGH (STANDARD)



TOP MOUNTED DRIVE (OPTIONAL)

For 6 in., 8 in. or 12 in. Centers Deduct The following

Roller Centers	Between Frame Bed Length	16" B.F.	18" B.F.	20" B.F.	22" B.F.	24" B.F.	26" B.F.	28" B.F.	32" B.F.	34" B.F.	38" B.F.	40" B.F.											
6"	Weight Deduction (lbs.)	-23	-46	-25	-50	-28	-55	-30	-59	-32	-63	-34	-68	-36	-72	-40	-80	-42	-84	-45	-89	-47	-93
8"		-34	-68	-37	-74	-41	-81	-44	-87	-47	-94	-51	-101	-53	-105	-59	-118	-63	-125	-66	-132	-69	-138
12"		-45	-90	-49	-98	-55	-108	-59	-116	-63	-124	-67	-134	-71	-142	-79	-158	-83	-166	-89	-176	-93	-184

How To Order

Model: **XXXXXXXX-XX-XXX-XX-XXXX-XXX-XXX-XX-XX-XXX-XX**

Model / Series:

Chain Driven Live Roller: (CDLR202, CDLR251, CDLR267, CDLR350)

Chain Driven Live Roller Curve: (CDC202, CDC251, CDC267)

Between Frame widths (inches):

CDLR202 & CDC202: (16, 18, 20, 22, 24, 26, 28, 32, 34, 38, 40)

CDLR251, CDC251, CDLR267, CDC267: (19, 21, 23, 25, 27, 31, 33, 37, 39, 43, 47, 51)

CDLR350: (27, 31, 35, 39, 43, 47, 51, 55)

Tread Roller Diameter:

(202) = 2" Dia. (CDLR202, CDC202 Only)

(251) = 2 1/2" Dia. (CDLR251, CDC251-Only)

(267) = 2 5/8" Dia. (CDLR267, CDC267 -Only)

(350) = 3 1/2" Dia. (CDLR350, CDC350 -Only)

Tread Roller Centers:

(60) = 6" Centers (CDLR202, CDC202, CDLR251, CDC251, CDLR267, CDC267- Only)

(75) = 7 1/2" Centers (CDLR251, CDC251, CDLR267, CDC267, CDLR350- Only)

(80) = 8" Centers (CDLR202, CDC202 -Only)

(100) = 10" Centers (CDLR251, CDC251, CDLR267, CDC267, CDLR350 - Only)

(120) = 12" Centers (CDLR202, CDC202, CDLR251, CDC251, CDLR267, CDC267, CDLR350 - Only).

(150) = 15" Centers (CDLR251, CDC251, CDLR267, CDC267 - Only)

Overall conveyor length:

Refer to length selection table

(ex: (0800)= 8'-0")

Paint color

(01) Blue, (02) Crème, (03) Safety Yellow, (04) Safety Orange, (05) Med. Metallic Grey, (06) White, (07) Dark Blue

Drive position:

(NDR) No Drive Required

(DLU) Left Hand, Mounted Low (Included in std. prc)

(DRU) Right Hand, Mounted Low (Included in std. prc)

(DLH) Left Hand, Mounted High (Add to std. price)

(DRH) Right Hand, Mounted High (Add to std. price)

(DLS) Left Hand, Side Mount (Add to std. price)

(DRS) Right Hand, Side Mount (Add to std. price)

Denotes horse power requirements:

(05) 1/2 HP (Included in Standard pricing)

(75) 3/4 HP (Add to std. price)

(10) 1 HP (Add to std. price)

(15) 1 1/2 HP (Add to std. price)

(20) 2 HP (Add to std. price)

(30) 3 HP (Add to std. price)

Denotes F.P.M. (Feet Per Minute)

requirements Std. 60 F.P.M.

(Selection from 30 F.P.M. to 200 F.P.M. in increments of 10 F.P.M.)

Guiding:

(NGS) = No guides required

(STD) = Formed guides

** For special guiding please reference Conveyor

Accessories catalog for part number

Supports:

(Top of Bed / Top of Roller height)

(STD) = Standard supports 31 1/2" to 43 1/2"

(NSP) = No supports required

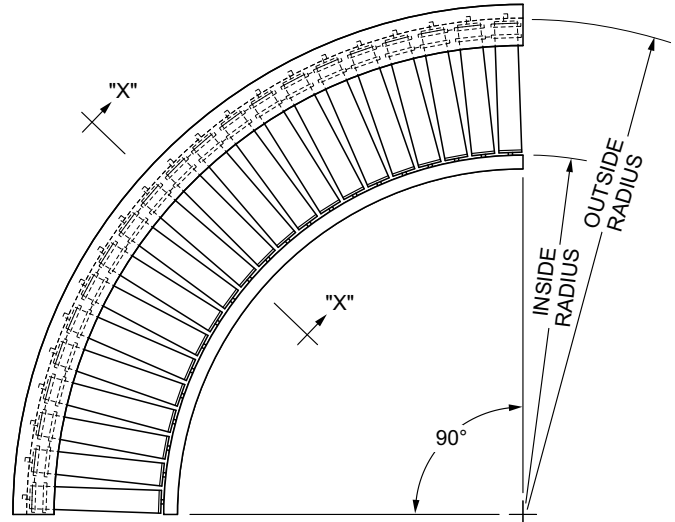
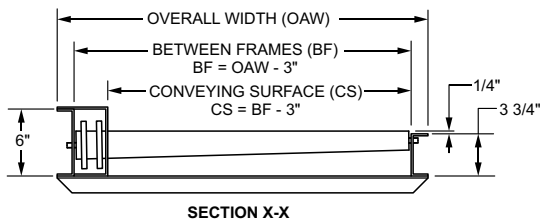
** If not standard please use top of bed / top of roller height dimensionally (ex: (12) = 1'-0" or (046) = 3'-10")

How To Order

CHAIN DRIVEN LIVE ROLLER CURVE CONVEYOR MODEL CDC202

Applications

- Wash Down Operations
- Oily Condition
- Positive Drive - No Belt Slippage



LOAD CAPACITY CHART	
Conveyor Speed 60 FPM	
HP	TOTAL LOAD
1/2	1625 lbs.
3/4	2375 lbs.
1	3025 lbs.
1 1/2	3900 lbs.
2	4750 lbs.

Standard Specifications:

Drive Chain - No. 40 roller chain on 4 in., 6 in. and 8 in. roller centers. No. 50 roller chain on 12 in. roller centers.

Bed - Conveying surface width 13 in., 15 in., 17 in., 19 in., 21 in., 23 in., 25 in., 29 in., 31 in., 35 in. and 37 in. Frame construction is 3 3/4 in. x 1 1/2 in. x 11 ga. painted formed steel channel on one side, 6 in. x 1 1/2 in. x 11 ga. painted formed steel channel on chain drive side. Frame is bolted together with 11 ga. formed channels. Sections are bolted together with butt couplings and floor supports.

Tread Rollers - 2 1/2 in. Dia. tapered x 12 ga. steel with #40 or #50 sprocket welded to roller tube, 7/16 in. hex shaft. Rollers spaced on 4 in., 6 in., 8 in. and 12 in. centers. Rollers are roller to roller driven.

Center Drive - Mounted underneath conveyor, center of section.

Floor Supports - Adjustable 28 in. to 40 in. from floor to top of rollers. One support supplied at each end of conveyor and at each bed joint.

Chain Guard - Lower chain guard is mounted on bottom of roller frame and upper chain guard is mounted above roller frame to totally enclose drive chain.

Motor - 1/2 H.P. 230/460/3/60 open motor.

Speed Reducer - C-Face mounted heavy duty worm gear reducer.

Roller Speed - 60 FPM constant.

Capacity - Maximum load 150 lbs. per foot; maximum unit load 500 lbs. Not to exceed Load Capacity Chart.

Optional Equipment:

Curves:

- 90° Curve with drive
- 90° Curve with without drive
- 45° Curve with drive
- 45° Curve with without drive
- 30° Curve with drive
- 30° Curve with without drive

Floor Supports - Lower or higher supports are available. Minimum elevation 15 in. from floor to top of roller.

Ceiling Hangers - Threaded rods 8 feet long with locking nuts and mounting hardware. Other lengths are available.

Side Mounted Drive - Drive mounted to side of conveyor section. Minimum elevation - 6" from floor to top of roller. Specify side.

Roller Set Low - Tread rollers mounted low in 6 in. x 11 ga. painted formed steel channel to form 2 in. high guard rails.

Motor - Single phase, totally enclosed, explosion proof, etc. Other H.P. are available.

Roller Speed - Constant and variable roller speeds available.

Electrical Controls - Magnetic starters, push button stations, manual one direction and reversing drum switches and others.

Guard Rails - Adjustable channel, continuous channel, or solid steel guard rails available.

CDC - Can be slave driven.

30° CURVE					
Between Frame Width	Overall Bed Width	Conveying Surface Width	Outside Radius (OR)	Inside Radius (IR)	Weight (lbs.)
					Tapered Rollers
16"	19"	13"	75"	59"	203
18"	21"	15"		57"	209
20"	23"	17"		55"	216
22"	25"	19"		53"	222
24"	27"	21"		51"	228
26"	29"	23"		49"	267
28"	31"	25"	99"	71"	286
32"	35"	29"		67"	301
34"	37"	31"		65"	307
38"	41"	35"		61"	322
40"	43"	37"		59"	337

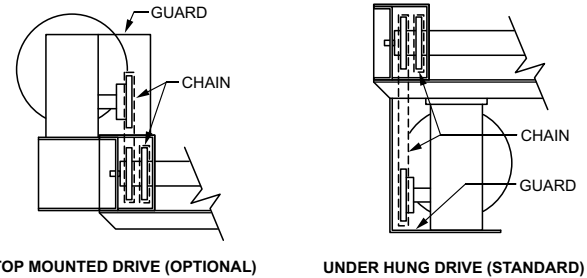
Note: Rollers based on 6" centers on outside rail

45° CURVE					
Between Frame Width	Overall Bed Width	Conveying Surface Width	Outside Radius (OR)	Inside Radius (IR)	Weight (lbs.)
					Tapered Rollers
16"	19"	13"	75"	59"	305
18"	21"	15"		57"	314
20"	23"	17"		55"	325
22"	25"	19"		53"	332
24"	27"	21"		51"	342
26"	29"	23"		49"	405
28"	31"	25"	99"	71"	430
32"	35"	29"		67"	452
34"	37"	31"		65"	462
38"	41"	35"		61"	469
40"	43"	37"		59"	506

Note: Rollers based on 6" centers on outside rail

90° CURVE					
Between Frame Width	Overall Bed Width	Conveying Surface Width	Outside Radius (OR)	Inside Radius (IR)	Weight (lbs.)
					Tapered Rollers
16"	19"	13"	75"	59"	609
18"	21"	15"		57"	627
20"	23"	17"		55"	649
22"	25"	19"		53"	664
24"	27"	21"		51"	684
26"	29"	23"		49"	809
28"	31"	25"	99"	71"	859
32"	35"	29"		67"	903
34"	37"	31"		65"	923
38"	41"	35"		61"	968
40"	43"	37"		59"	1011

Note: Rollers based on 6" centers on outside rail



TOP MOUNTED DRIVE (OPTIONAL)

UNDER HUNG DRIVE (STANDARD)

How To Order

Model: XXXXXXX-XX-XXX-XX-XXXX-XXX-XXX-XX-XX-XXX-XX

<p>Model / Series: _____</p> <p>Chain Driven Live Roller: (CDLR202, CDLR251, CDLR267, CDLR350)</p> <p>Chain Driven Live Roller Curve: (CDC202, CDC251, CDC267)</p> <p>Between Frame widths (inches): _____</p> <p>CDLR202 & CDC202: (16, 18, 20, 22, 24, 26, 28, 32, 34, 38, 40)</p> <p>CDLR251, CDC251, CDLR267, CDC267: (19, 21, 23, 25, 27, 31, 33, 37, 39, 43, 47, 51)</p> <p>CDLR350: (27, 31, 35, 39, 43, 47, 51, 55)</p> <p>Tread Roller Diameter: _____</p> <p>(202) = 2" Dia. (CDLR202, CDC202 Only)</p> <p>(251) = 2 1/2" Dia. (CDLR251, CDC251-Only)</p> <p>(267) = 2 5/8" Dia. (CDLR267, CDC267 -Only)</p> <p>(350) = 3 1/2" Dia. (CDLR350, CDC350 -Only)</p> <p>Tread Roller Centers: _____</p> <p>(60) = 6" Centers (CDLR202, CDC202, CDLR251, CDC251, CDLR267, CDC267- Only)</p> <p>(75) = 7 1/2" Centers (CDLR251, CDC251, CDLR267, CDC267, CDLR350- Only)</p> <p>(80) = 8" Centers (CDLR202, CDC202 -Only)</p> <p>(100) = 10" Centers (CDLR251, CDC251, CDLR267, CDC267, CDLR350 - Only)</p> <p>(120) = 12" Centers (CDLR202, CDC202, CDLR251, CDC251, CDLR267, CDC267, CDLR350 - Only).</p> <p>(150) = 15" Centers (CDLR251, CDC251, CDLR267, CDC267 - Only)</p> <p>Overall conveyor length: _____</p> <p>Refer to length selection table</p> <p>(ex: (0800)= 8'-0")</p>	<p>Paint color</p> <p>(01) Blue, (02) Crème, (03) Safety Yellow, (04) Safety Orange, (05) Med. Metallic Grey, (06) White, (07) Dark Blue</p> <p>Drive position:</p> <p>(NDR) No Drive Required</p> <p>(DLU) Left Hand, Mounted Low (Included in std. prc)</p> <p>(DRU) Right Hand, Mounted Low (Included in std. prc)</p> <p>(DLH) Left Hand, Mounted High (Add to std. price)</p> <p>(DRH) Right Hand, Mounted High (Add to std. price)</p> <p>(DLS) Left Hand, Side Mount (Add to std. price)</p> <p>(DRS) Right Hand, Side Mount (Add to std. price)</p> <p>Denotes horse power requirements:</p> <p>(05) 1/2 HP (Included in Standard pricing)</p> <p>(75) 3/4 HP (Add to std. price)</p> <p>(10) 1 HP (Add to std. price)</p> <p>(15) 1 1/2 HP (Add to std. price)</p> <p>(20) 2 HP (Add to std. price)</p> <p>(30) 3 HP (Add to std. price)</p> <p>Denotes F.P.M. (Feet Per Minute) requirements <u>Std. 60 F.P.M.</u></p> <p>(Selection from 30 F.P.M. to 200 F.P.M. in increments of 10 F.P.M.)</p> <p>Guiding:</p> <p>(NGS) = No guides required</p> <p>(STD) = Formed guides</p> <p>** For special guiding please reference Conveyor Accessories catalog for part number</p> <p>Supports:</p> <p>(Top of Bed / Top of Roller height)</p> <p>(STD) = Standard supports 31 1/2" to 43 1/2"</p> <p>(NSP) = No supports required</p> <p>** If not standard please use top of bed / top of roller height dimensionally (ex: (12) = 1'-0" or (046) = 3'-10")</p>
--	--

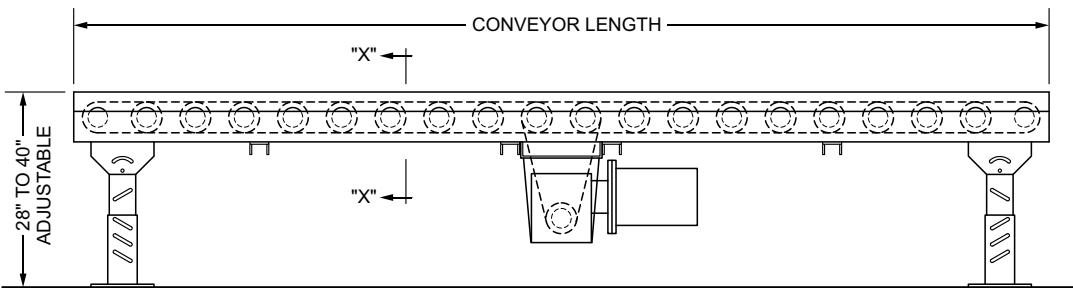
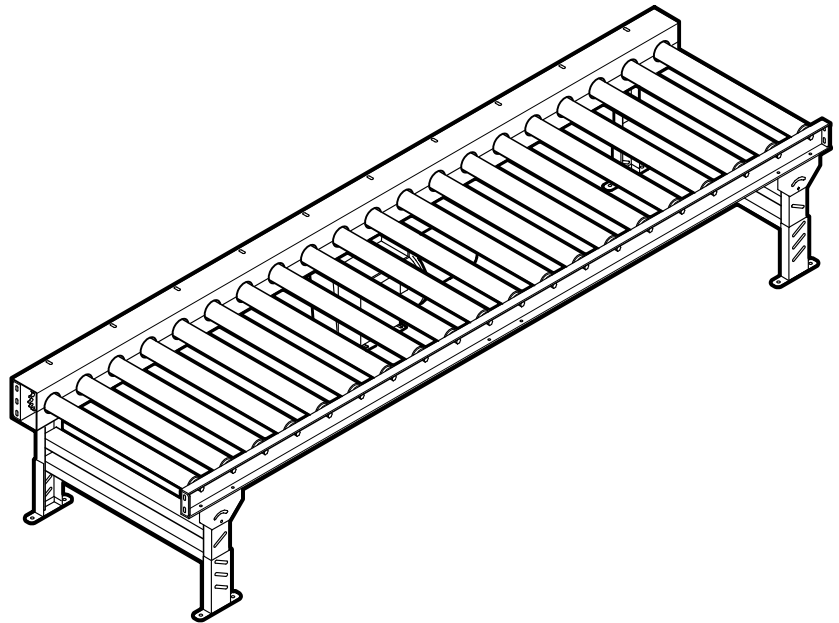
How To Order

CHAIN DRIVEN LIVE ROLLER CONVEYOR MODEL CDLR251

Applications

- Wash Down Operations
- Oily Condition
- Pallets
- Drums

Positive Drive - No Belt Slippage



LOAD CAPACITY CHART		
Total Live Load @ 30 FPM		
HP	Up to 40 feet	Up to 100 feet
3/4	4,535 lbs.	2,160 lbs.
1	6,580 lbs.	4,100 lbs.
1 1/2	10,800 lbs.	8,200 lbs.
2	15,000 lbs.	12,900 lbs.

Standard Specifications:

Drive Chain - No. 50 roller chain on 6 in., 7 1/2 in. and 10 in. roller centers. No. 60 roller chain on 12 in. and 15 in. roller centers.

Bed - Conveying surface width 13 in., 15 in., 17 in., 19 in., 21 in., 23 in., 25 in., 29 in., 31 in., 35 in. and 37 in. Frame construction is 4 in. x 1 1/2 in. x 11 ga. painted formed steel channel on one side, 6 in. x 1 1/2 in. x 11 ga. painted formed steel channel on chain drive side. Frame is bolted together with 11 ga. formed channels. Sections are bolted together with butt couplings and floor supports.

Tread Rollers - 2 1/2 in. dia. x 11 ga. steel with #50 or #60 sprocket welded to roller tube, 11/16 in. hex shaft. Rollers spaced on 6 in., 7 1/2 in., 10 in., 12 in. and 15 in. centers. Rollers are roller to roller driven.

Center Drive - Mounted underneath conveyor, center of section.

Floor Supports - Adjustable 28 in. to 40 in. from floor to top of rollers. One support supplied at each end of conveyor and at each bed joint.

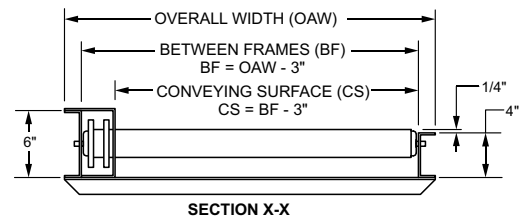
Chain Guard - Lower chain guard is mounted on bottom of roller frame and upper chain guard is mounted above roller frame to totally enclose drive chain.

Motor - 3/4 H.P. 230/460/3/60 open motor.

Speed Reducer - C-Face mounted heavy duty worm gear reducer.

Roller Speed - 60 FPM constant.

Capacity - Maximum load 150 lbs. per foot; maximum unit load 500 lbs. Not to exceed Load Capacity Chart.



Optional Equipment:

Floor Supports - Lower or higher supports are available. Minimum elevation 15 in. from floor to top of roller.

Ceiling Hangers - Threaded rods 8 feet long with locking nuts and mounting hardware. Other lengths are available.

Side Mounted Drive - Drive mounted to side of conveyor section. Minimum elevation - 6" from floor to top of roller. Specify side.

Roller Set Low - Tread rollers mounted low in 6 in. x 11 ga. painted formed steel channel to form 1 3/4 in. high guard rails.

Motor - Single phase, totally enclosed, explosion proof, etc. Other H.P. are available.

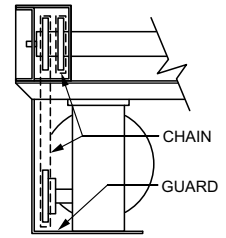
Roller Speed - Constant and variable roller speeds available.

Electrical Controls - Magnetic starters, push button stations, manual one direction and reversing drum switches and others.

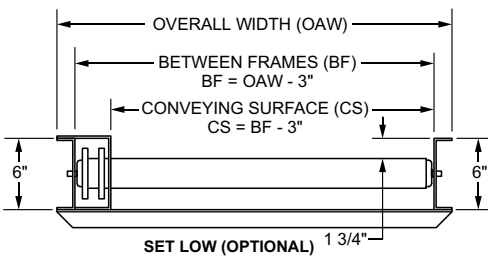
Guard Rails - Adjustable channel, continuous channel, or solid steel guard rails available.

CDLR - Can be slave driven

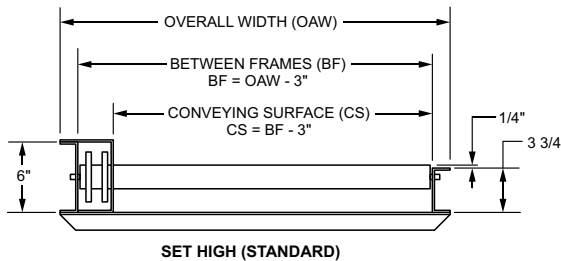
Conveyor Length Size "A"	Between Frame		19"	21"	23"	25"	27"	31"	33"	37"	39"	43"	47"	51"
	Overall Width		22"	24"	26"	28"	30"	34"	36"	40"	42"	46"	50"	54"
	Conveying Surface		16"	18"	20"	22"	24"	28"	30"	34"	36"	40"	44"	48"
5'	Weight (lbs.) Based on 5" Roller Centers	326	337	351	358	372	392	406	430	440	463	486	508	
10'		553	574	599	616	639	679	701	744	764	806	849	890	
15'		780	810	847	872	905	964	996	1059	1088	1149	1212	1271	
20'		1007	1233	1296	1338	1392	1498	1551	1567	1736	1814	1927	2033	
25'		1234	1517	1591	1640	1704	1818	1881	2003	2060	2178	2301	2415	
30'		1461	1756	1839	1896	1971	2102	2176	2317	2384	2521	2664	2797	
40'		1915	2229	2389	2408	2504	2671	2766	2946	3032	3207	3390	3560	
50'		2369	2702	2885	2920	3037	3240	3356	3575	3680	3893	4116	4323	
60'		2823	3175	3381	3432	3570	3809	3946	4204	4328	4579	4842	5086	
70'		3277	3648	3877	3944	4103	4378	4536	4833	4976	5265	5568	5849	
80'	3731	4121	4373	4456	4636	4947	5126	5462	5591	6294	6294	6612		
90'	4185	4594	4869	4968	5169	5516	5716	6091	6272	6673	7020	7375		
100'	4639	5067	5365	5480	5702	6085	6306	6720	6920	7359	7746	8148		



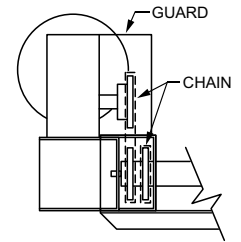
UNDER HUNG DRIVE (STANDARD)



SET LOW (OPTIONAL) 1 3/4"



SET HIGH (STANDARD)



TOP MOUNTED DRIVE (OPTIONAL)

For 6 in., 7 1/2 in., 12 in. & 15 in. Centers Deduct Weight Listed Below

Model 251		5' 0" OAL Bed Sections										10' 0" OAL Bed Sections													
Roller Centers	Between Frame	19"	21"	23"	25"	27"	31"	33"	37"	39"	43"	47"	51"	19"	21"	23"	25"	27"	31"	33"	37"	39"	43"	47"	51"
6"	Weight Deduction (lbs.)	37	39	43	46	49	55	58	64	67	72	79	84	73	79	87	91	98	108	115	127	133	145	157	168
7 1/2"		37	39	43	46	49	55	58	64	67	72	79	84	73	79	87	91	98	108	115	127	133	145	157	168
10"		55	59	65	69	73	82	86	96	100	109	118	126	110	119	130	137	147	168	173	190	200	235	245	252
12"		63	68	75	79	84	94	100	110	116	134	136	146	126	137	150	159	169	189	201	220	232	269	273	292
15"		73	79	86	91	97	109	115	127	133	145	157	168	147	158	173	182	195	217	230	254	266	289	314	352

How To Order

Model: XXXXXXX-XX-XXX-XX-XXXX-XXX-XXX-XX-XX-XXX-XX

Model / Series:

Chain Driven Live Roller: (CDLR202, CDLR251, CDLR267, CDLR350)

Chain Driven Live Roller Curve: (CDC202, CDC251, CDC267)

Between Frame widths (inches):

CDLR202 & CDC202: (16, 18, 20, 22, 24, 26, 28, 32, 34, 38, 40)

CDLR251, CDC251, CDLR267, CDC267: (19, 21, 23, 25, 27, 31, 33, 37, 39, 43, 47, 51)

CDLR350: (27, 31, 35, 39, 43, 47, 51, 55)

Tread Roller Diameter:

(202) = 2" Dia. (CDLR202, CDC202 -Only)

(251) = 2 1/2" Dia. (CDLR251, CDC251 -Only)

(267) = 2 5/8" Dia. (CDLR267, CDC267 -Only)

(350) = 3 1/2" Dia. (CDLR350, CDC350 -Only)

Tread Roller Centers:

(60) = 6" Centers (CDLR202, CDC202, CDLR251, CDC251, CDLR267, CDC267 - Only)

(75) = 7 1/2" Centers (CDLR251, CDC251, CDLR267, CDC267, CDLR350 - Only)

(80) = 8" Centers (CDLR202, CDC202 -Only)

(100) = 10" Centers (CDLR251, CDC251, CDLR267, CDC267, CDLR350 - Only)

(120) = 12" Centers (CDLR202, CDC202, CDLR251, CDC251, CDLR267, CDC267, CDLR350 - Only).

(150) = 15" Centers (CDLR251, CDC251, CDLR267, CDC267 - Only)

Overall conveyor length:

Refer to length selection table

(ex: (0800)= 8'-0")

Paint color

(01) Blue, (02) Crème, (03) Safety Yellow, (04) Safety Orange, (05) Med. Metallic Grey, (06) White, (07) Dark Blue

Drive position:

(NDR) No Drive Required

(DLU) Left Hand, Mounted Low (Included in std. prc)

(DRU) Right Hand, Mounted Low (Included in std. prc)

(DLH) Left Hand, Mounted High (Add to std. price)

(DRH) Right Hand, Mounted High (Add to std. price)

(DLS) Left Hand, Side Mount (Add to std. price)

(DRS) Right Hand, Side Mount (Add to std. price)

Denotes horse power requirements:

(05) 1/2 HP (Included in Standard pricing)

(75) 3/4 HP (Add to std. price)

(10) 1 HP (Add to std. price)

(15) 1 1/2 HP (Add to std. price)

(20) 2 HP (Add to std. price)

(30) 3 HP (Add to std. price)

Denotes F.P.M. (Feet Per Minute)

requirements Std. 60 F.P.M.

(Selection from 30 F.P.M. to 200 F.P.M. in increments of 10 F.P.M.)

Guiding:

(NGS) = No guides required

(STD) = Formed guides

** For special guiding please reference Conveyor

Accessories catalog for part number

Supports:

(Top of Bed / Top of Roller height)

(STD) = Standard supports 31 1/2" to 43 1/2"

(NSP) = No supports required

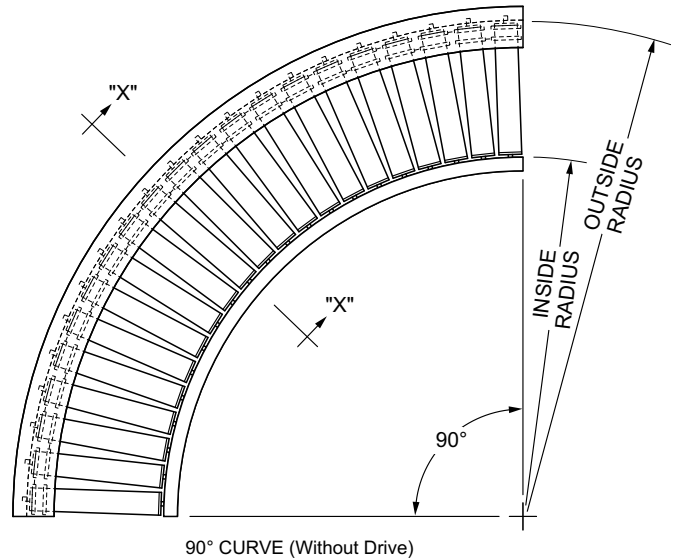
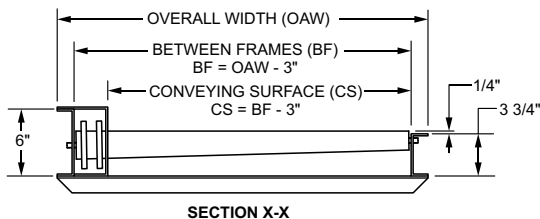
** If not standard please use top of bed / top of roller height dimensionally (ex: (12) = 1'-0" or (046) = 3'-10")

How To Order

CHAIN DRIVEN LIVE ROLLER CURVE CONVEYOR MODEL CDC251

Applications

- Wash Down Operations
- Oily Condition
- Positive Drive - No Belt Slippage



LOAD CAPACITY CHART		
Total Live Load @ 30 FPM		
HP	Up to 40 feet	Up to 100 feet
3/4	4,535 lbs.	2,160 lbs.
1	6,580 lbs.	4,100 lbs.
1 1/2	10,800 lbs.	8,200 lbs.
2	15,000 lbs.	12,900 lbs.

Standard Specifications:

Drive Chain - No. 50 roller chain on 6 in., 7 1/2 in. and 10 in. roller centers. No. 60 roller chain on 12 in. and 15 in. roller centers.

Bed - Conveying surface width 13 in., 15 in., 17 in., 19 in., 21 in., 23 in., 25 in., 29 in., 31 in., 35 in. and 37 in. Frame construction is 4 in. x 1 1/2 in. x 11 ga. painted formed steel channel on one side, 6 in. x 1 1/2 in. x 11 ga. painted formed steel channel on chain drive side. Frame is bolted together with 11 ga. formed channels. Sections are bolted together with butt couplings and floor supports.

Tread Rollers - 2 1/2 in. dia. x 11 ga. steel with #50 or #60 sprocket welded to roller tube, 11/16 in. hex shaft. Rollers spaced on 6 in., 7 1/2 in., 10 in., 12 in. and 15 in. centers. Rollers are roller to roller driven.

Center Drive - Mounted underneath conveyor, center of section.

Floor Supports - Adjustable 28 in. to 40 in. from floor to top of rollers. One support supplied at each end of conveyor and at each bed joint.

Chain Guard - Lower chain guard is mounted on bottom of roller frame and upper chain guard is mounted above roller frame to totally enclose drive chain.

Motor - 3/4 H.P. 230/460/3/60 open motor.

Speed Reducer - C-Face mounted heavy duty worm gear reducer.

Roller Speed - 60 FPM constant.

Capacity - Maximum load 150 lbs. per foot; maximum unit load 500 lbs. Not to exceed Load Capacity Chart.

Optional Equipment:

Curves:

- 90° Curve with drive
- 90° Curve with without drive
- 45° Curve with drive
- 45° Curve with without drive
- 30° Curve with drive
- 30° Curve with without drive

Floor Supports - Lower or higher supports are available. Minimum elevation 15 in. from floor to top of roller.

Ceiling Hangers - Threaded rods 8 feet long with locking nuts and mounting hardware. Other lengths are available.

Side Mounted Drive - Drive mounted to side of conveyor section. Minimum elevation - 6" from floor to top of roller. Specify side.

Roller Set Low - Tread rollers mounted low in 6 in. x 11 ga. painted formed steel channel to form 1 3/4 in. high guard rails.

Motor - Single phase, totally enclosed, explosion proof, etc. Other H.P. are available.

Roller Speed - Constant and variable roller speeds available.

Electrical Controls - Magnetic starters, push button stations, manual one direction and reversing drum switches and others.

Guard Rails - Adjustable channel, continuous channel, or solid steel guard rails available.

CDLR - Can be slave driven

30° CURVE					
Between Frame Width	Overall Bed Width	Conveying Surface Width	Outside Radius (OR)	Inside Radius (IR)	Weight (lbs.)
					Tapered Rollers
16"	19"	13"	75"	59"	203
18"	21"	15"		57"	209
20"	23"	17"		55"	216
22"	25"	19"		53"	222
24"	27"	21"		51"	228
26"	29"	23"		49"	267
28"	31"	25"	99"	71"	286
32"	35"	29"		67"	301
34"	37"	31"		65"	307
38"	41"	35"		61"	322
40"	43"	37"		59"	337

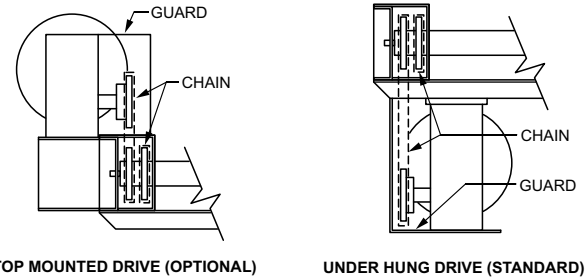
Note: Rollers based on 6" centers on outside rail

45° CURVE					
Between Frame Width	Overall Bed Width	Conveying Surface Width	Outside Radius (OR)	Inside Radius (IR)	Weight (lbs.)
					Tapered Rollers
16"	19"	13"	75"	59"	305
18"	21"	15"		57"	314
20"	23"	17"		55"	325
22"	25"	19"		53"	332
24"	27"	21"		51"	342
26"	29"	23"		49"	405
28"	31"	25"	99"	71"	430
32"	35"	29"		67"	452
34"	37"	31"		65"	462
38"	41"	35"		61"	469
40"	43"	37"		59"	506

Note: Rollers based on 6" centers on outside rail

90° CURVE					
Between Frame Width	Overall Bed Width	Conveying Surface Width	Outside Radius (OR)	Inside Radius (IR)	Weight (lbs.)
					Tapered Rollers
16"	19"	13"	75"	59"	609
18"	21"	15"		57"	627
20"	23"	17"		55"	649
22"	25"	19"		53"	664
24"	27"	21"		51"	684
26"	29"	23"		49"	809
28"	31"	25"	99"	71"	859
32"	35"	29"		67"	903
34"	37"	31"		65"	923
38"	41"	35"		61"	968
40"	43"	37"		59"	1011

Note: Rollers based on 6" centers on outside rail



TOP MOUNTED DRIVE (OPTIONAL)

UNDER HUNG DRIVE (STANDARD)

How To Order

Model: XXXXXXX-XX-XXX-XX-XXXX-XXX-XXX-XX-XX-XXX-XX

<p>Model / Series: _____</p> <p>Chain Driven Live Roller: (CDLR202, CDLR251, CDLR267, CDLR350)</p> <p>Chain Driven Live Roller Curve: (CDC202, CDC251, CDC267)</p> <p>Between Frame widths (inches): _____</p> <p>CDLR202 & CDC202: (16, 18, 20, 22, 24, 26, 28, 32, 34, 38, 40)</p> <p>CDLR251, CDC251, CDLR267, CDC267: (19, 21, 23, 25, 27, 31, 33, 37, 39, 43, 47, 51)</p> <p>CDLR350: (27, 31, 35, 39, 43, 47, 51, 55)</p> <p>Tread Roller Diameter: _____</p> <p>(202) = 2" Dia. (CDLR202, CDC202 Only)</p> <p>(251) = 2 1/2" Dia. (CDLR251, CDC251-Only)</p> <p>(267) = 2 5/8" Dia. (CDLR267, CDC267 -Only)</p> <p>(350) = 3 1/2" Dia. (CDLR350, CDC350 -Only)</p> <p>Tread Roller Centers: _____</p> <p>(60) = 6" Centers (CDLR202, CDC202, CDLR251, CDC251, CDLR267, CDC267- Only)</p> <p>(75) = 7 1/2" Centers (CDLR251, CDC251, CDLR267, CDC267, CDLR350- Only)</p> <p>(80) = 8" Centers (CDLR202, CDC202 -Only)</p> <p>(100) = 10" Centers (CDLR251, CDC251, CDLR267, CDC267, CDLR350 - Only)</p> <p>(120) = 12" Centers (CDLR202, CDC202, CDLR251, CDC251, CDLR267, CDC267, CDLR350 - Only).</p> <p>(150) = 15" Centers (CDLR251, CDC251, CDLR267, CDC267 - Only)</p> <p>Overall conveyor length: _____</p> <p>Refer to length selection table</p> <p>(ex: 0800)= 8'-0"</p>	<p>Paint color</p> <p>(01) Blue, (02) Crème, (03) Safety Yellow, (04) Safety Orange, (05) Med. Metallic Grey, (06) White, (07) Dark Blue</p> <p>Drive position:</p> <p>(NDR) No Drive Required</p> <p>(DLU) Left Hand, Mounted Low (Included in std. prc)</p> <p>(DRU) Right Hand, Mounted Low (Included in std. prc)</p> <p>(DLH) Left Hand, Mounted High (Add to std. price)</p> <p>(DRH) Right Hand, Mounted High (Add to std. price)</p> <p>(DLS) Left Hand, Side Mount (Add to std. price)</p> <p>(DRS) Right Hand, Side Mount (Add to std. price)</p> <p>Denotes horse power requirements:</p> <p>(05) 1/2 HP (Included in Standard pricing)</p> <p>(75) 3/4 HP (Add to std. price)</p> <p>(10) 1 HP (Add to std. price)</p> <p>(15) 1 1/2 HP (Add to std. price)</p> <p>(20) 2 HP (Add to std. price)</p> <p>(30) 3 HP (Add to std. price)</p> <p>Denotes F.P.M. (Feet Per Minute) requirements <u>Std. 60 F.P.M.</u></p> <p>(Selection from 30 F.P.M. to 200 F.P.M. in increments of 10 F.P.M.)</p> <p>Guiding:</p> <p>(NGS) = No guides required</p> <p>(STD) = Formed guides</p> <p>** For special guiding please reference Conveyor Accessories catalog for part number</p> <p>Supports:</p> <p>(Top of Bed / Top of Roller height)</p> <p>(STD) = Standard supports 31 1/2" to 43 1/2"</p> <p>(NSP) = No supports required</p> <p>** If not standard please use top of bed / top of roller height dimensionally (ex: (12) = 1'-0" or (046) = 3'-10")</p>
--	--

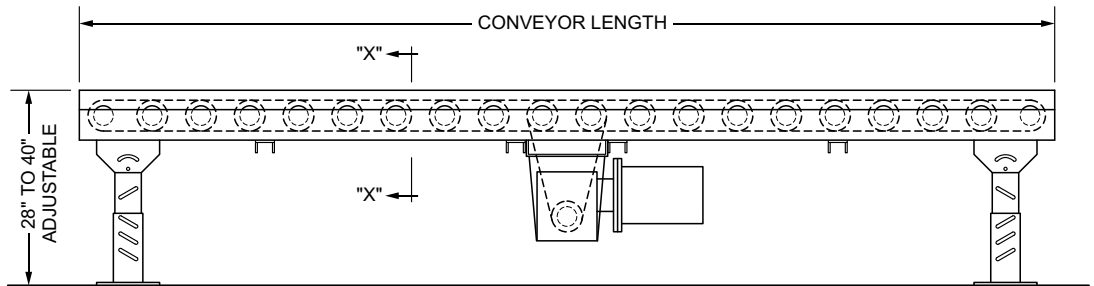
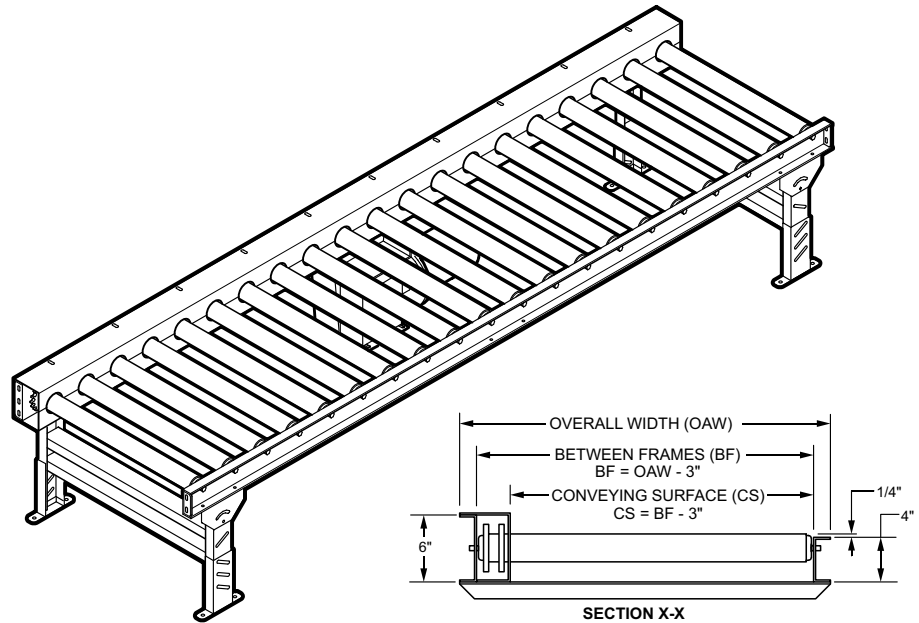
How To Order

CHAIN DRIVEN LIVE ROLLER CONVEYOR MODEL CDLR267

Applications

- Wash Down Operations
- Oily Condition
- Pallets
- Drums

Positive Drive - No Belt Slippage



LOAD CAPACITY CHART		
Total Live Load @ 30 FPM		
HP	Up to 40 feet	Up to 100 feet
3/4	4,535 lbs.	2,160 lbs.
1	6,580 lbs.	4,100 lbs.
1 1/2	10,800 lbs.	8,200 lbs.
2	15,000 lbs.	12,900 lbs.

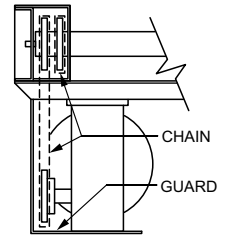
Standard Specifications:

Drive Chain - No. 50 roller chain or No. 60 roller chain.
Bed - Conveying surface width 16 in., 18 in., 20 in., 22 in., 24 in., 28 in., 30 in., 34 in., 36 in., 40 in., 44 in. and 48 in. 2 5/8 in. x 7 ga. steel tread rollers. No. 50 chain is used on 5 in., 7 1/2 in., 10 in. and 15 in. roller centers only. No. 60 chain is used on 6 in., 7 1/2 in., 12 in. and 15 in. roller centers only. Tread rollers mounted in 4 and 6 in. x 7 ga. formed steel channel frame. Sections are bolted together with butt couplings and floor supports.
Tread Rollers - 2 5/8 in. dia. x 7 ga. steel with #50 or #60 sprocket welded to roller tube, 11/16 in. hex shaft. Rollers spaced on 6 in., 7 1/2 in., 10 in., 12 in. and 15 in. centers. Rollers are roller to roller driven.
Center Drive - Mounted underneath conveyor, center of section. Can be placed in any section of conveyor length.
Floor Supports - Heavy duty supports are adjustable 30 in. to 36 in. from floor to top of roller. One support at every bed joint and end of conveyor.
Chain Guard - Lower chain guard is mounted on bottom of roller frame and upper chain guard is mounted above roller frame to totally enclose drive chain.
Motor - 3/4 H.P. 230/460/3/60 open motor.
Speed Reducer - C-Face mounted heavy duty worm gear reducer.
Bearings - Removable-sealed-prelubricated ball bearings.
Speed - 60 FPM .
Capacity - Maximum load per linear foot of conveyor 300 lbs. with supports on 10' centers, 1,000 lbs. with supports on 5'-0" centers.

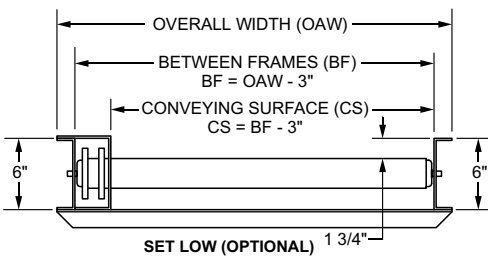
Optional Equipment:

Floor Supports - Lower or higher supports are available. Minimum elevation 16 in.
Side Mounted Drive - Motor-reducer unit can be mounted to side of conveyor frame. Drive is higher than conveyor frame. Minimum elevation to top of roller is 6 in.
Roller Set Low - Tread rollers mounted low in 5 in. x 6.7 lb. structural steel channel frame to form 5/8 in. high guard rails.
Motor - Single phase, totally enclosed, explosion proof, etc. Other H.P. are available.
Roller Speed - Constant and variable roller speeds available.
Electrical Controls - One direction or reversible magnetic starter, manual motor starter, push buttons, and others.
Frame - Structural steel channel.

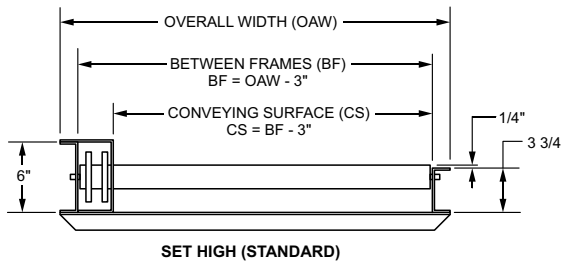
Conveyor Length Size "A"	Between Frame		19"	21"	23"	25"	27"	31"	33"	37"	39"	43"	47"	51"
	Overall Width		22"	24"	26"	28"	30"	34"	36"	40"	42"	46"	50"	54"
	Conveying Surface		16"	18"	20"	22"	24"	28"	30"	34"	36"	40"	44"	48"
5'	Weight (lbs.) Based on 5" Roller Centers	371	385	401	413	428	458	471	501	515	544	574	603	
10'		643	667	698	721	749	804	831	886	912	967	1025	1080	
15'		915	951	996	1030	1070	1152	1164	1272	1311	1391	1476	1556	
20'		1187	1283	1343	1384	1438	1533	1586	1688	1788	1835	1950	2135	
25'		1459	1620	1660	1700	1714	1846	1911	2043	2107	2238	2378	2509	
30'		1731	1799	1891	1955	2035	2192	2271	2428	2504	2661	2829	2966	
40'		2275	2365	2486	2572	2678	2886	2991	3199	3300	3508	3731	3939	
50'		2819	2931	3081	3189	3321	3580	3711	3970	4096	4355	4633	4892	
60'		3363	3497	3676	3806	3964	4274	4431	4741	4892	5202	5535	5845	
70'		3907	4063	4271	4423	4607	4968	5151	5512	5688	6049	6437	6798	
80'	4451	4629	4866	5040	5250	5652	5871	6283	6484	6896	7339	7751		
90'	4995	5195	5461	5657	5893	6376	6591	7054	7280	7743	8241	8704		
100'	5339	5761	6056	6480	6536	7070	7311	7825	8076	8590	9143	9657		



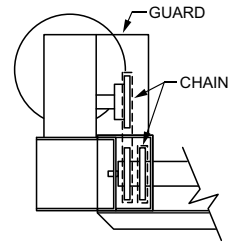
UNDER HUNG DRIVE (STANDARD)



SET LOW (OPTIONAL) 1 3/4"



SET HIGH (STANDARD)



TOP MOUNTED DRIVE (OPTIONAL)

For 6 in., 7 1/2 in., 12 in. & 15 in. Centers Deduct Weight Listed Below

Model 251		5' 0" OAL Bed Sections										10' 0" OAL Bed Sections													
Roller Centers	Between Frame	19"	21"	23"	25"	27"	31"	33"	37"	39"	43"	47"	51"	19"	21"	23"	25"	27"	31"	33"	37"	39"	43"	47"	51"
6"	Weight Deduction (lbs.)	50	54	58	61	65	74	77	85	90	98	100	113	99	105	115	121	130	146	154	170	177	194	211	227
7 1/2"		50	54	58	61	65	74	77	85	90	98	100	113	99	105	115	121	130	146	154	170	177	194	211	227
10"		74	79	87	91	97	109	115	127	133	145	158	170	121	127	141	149	160	184	194	214	224	244	266	286
12"		77	82	89	96	103	116	123	130	138	152	169	181	148	158	172	182	194	218	230	254	266	290	316	340
15"		99	106	115	121	130	146	153	170	178	194	211	226	197	211	229	243	259	291	308	239	355	388	416	454

How To Order

Model: XXXXXXX-XX-XXX-XX-XXXX-XXX-XXX-XX-XX-XXX-XX

Model / Series:

Chain Driven Live Roller: (CDLR202, CDLR251, CDLR267, CDLR350)

Chain Driven Live Roller Curve: (CDC202, CDC251, CDC267)

Between Frame widths (inches):

CDLR202 & CDC202: (16, 18, 20, 22, 24, 26, 28, 32, 34, 38, 40)

CDLR251, CDC251, CDLR267, CDC267: (19, 21, 23, 25, 27, 31, 33, 37, 39, 43, 47, 51)

CDLR350: (27, 31, 35, 39, 43, 47, 51, 55)

Tread Roller Diameter:

(202) = 2" Dia. (CDLR202, CDC202 -Only)

(251) = 2 1/2" Dia. (CDLR251, CDC251 -Only)

(267) = 2 5/8" Dia. (CDLR267, CDC267 -Only)

(350) = 3 1/2" Dia. (CDLR350, CDC350 -Only)

Tread Roller Centers:

(60) = 6" Centers (CDLR202, CDC202, CDLR251, CDC251, CDLR267, CDC267 - Only)

(75) = 7 1/2" Centers (CDLR251, CDC251, CDLR267, CDC267, CDLR350 - Only)

(80) = 8" Centers (CDLR202, CDC202 -Only)

(100) = 10" Centers (CDLR251, CDC251, CDLR267, CDC267, CDLR350 - Only)

(120) = 12" Centers (CDLR202, CDC202, CDLR251, CDC251, CDLR267, CDC267, CDLR350 - Only)

(150) = 15" Centers (CDLR251, CDC251, CDLR267, CDC267 - Only)

Overall conveyor length:

Refer to length selection table

(ex: (0800)= 8'-0")

Paint color

(01) Blue, (02) Crème, (03) Safety Yellow, (04) Safety Orange, (05) Med. Metallic Grey, (06) White, (07) Dark Blue

Drive position:

(NDR) No Drive Required

(DLU) Left Hand, Mounted Low (Included in std. prc)

(DRU) Right Hand, Mounted Low (Included in std. prc)

(DLH) Left Hand, Mounted High (Add to std. price)

(DRH) Right Hand, Mounted High (Add to std. price)

(DLS) Left Hand, Side Mount (Add to std. price)

(DRS) Right Hand, Side Mount (Add to std. price)

Denotes horse power requirements:

(05) 1/2 HP (Included in Standard pricing)

(75) 3/4 HP (Add to std. price)

(10) 1 HP (Add to std. price)

(15) 1 1/2 HP (Add to std. price)

(20) 2 HP (Add to std. price)

(30) 3 HP (Add to std. price)

Denotes F.P.M. (Feet Per Minute)

requirements Std. 60 F.P.M.

(Selection from 30 F.P.M. to 200 F.P.M. in

increments of 10 F.P.M.)

Guiding:

(NGS) = No guides required

(STD) = Formed guides

** For special guiding please reference Conveyor

Accessories catalog for part number

Supports:

(Top of Bed / Top of Roller height)

(STD) = Standard supports 31 1/2" to 43 1/2"

(NSP) = No supports required

** If not standard please use top of bed / top of roller

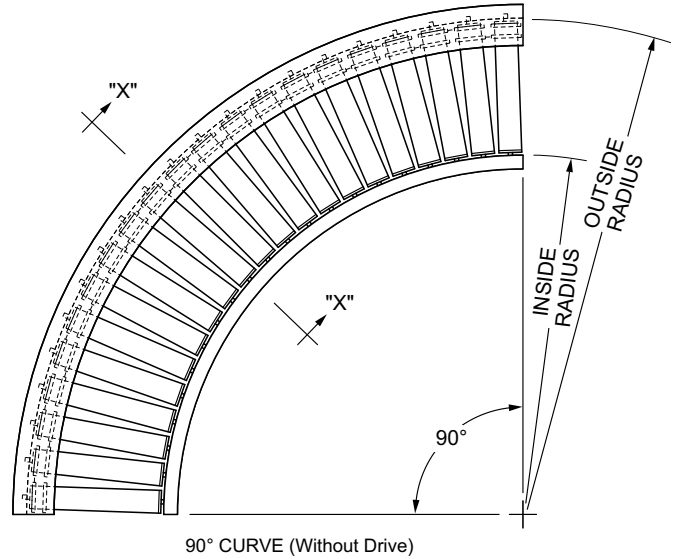
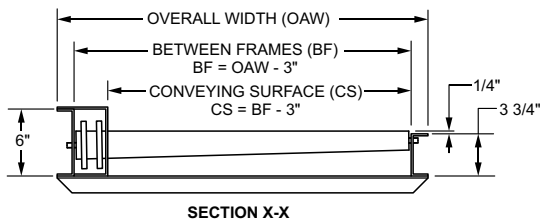
height dimensionally (ex: (12) = 1'-0" or (046) = 3'-10")

How To Order

CHAIN DRIVEN LIVE ROLLER CURVE CONVEYOR MODEL CDC267

Applications

- Wash Down Operations
- Oily Condition
- Positive Drive - No Belt Slippage



LOAD CAPACITY CHART		
Total Live Load @ 30 FPM		
HP	Up to 40 feet	Up to 100 feet
3/4	4,535 lbs.	2,160 lbs.
1	6,580 lbs.	4,100 lbs.
1 1/2	10,800 lbs.	8,200 lbs.
2	15,000 lbs.	12,900 lbs.

Standard Specifications:

Drive Chain - No. 50 roller chain on 6 in., 7 1/2 in. and 10 in. roller centers. No. 60 roller chain on 12 in. and 15 in. roller centers.

Bed - Conveying surface width 13 in., 15 in., 17 in., 19 in., 21 in., 23 in., 25 in., 29 in., 31 in., 35 in. and 37 in. Frame construction is 4 in. x 1 1/2 in. x 11 ga. painted formed steel channel on one side, 6 in. x 1 1/2 in. x 11 ga. painted formed steel channel on chain drive side. Frame is bolted together with 11 ga. formed channels. Sections are bolted together with butt couplings and floor supports.

Tread Rollers - 2 5/8 in. dia. x 7ga. steel with #50 or #60 sprocket welded to roller tube, 11/16 in. Hex shaft. Rollers spaced on 6 in., 7 1/2 in., 10 in., 12 in. and 15 in. centers. Rollers are roller to roller driven.

Center Drive - Mounted underneath conveyor, center of section.

Floor Supports - Adjustable 28 in. to 40 in. from floor to top of rollers. One support supplied at each end of conveyor and at each bed joint.

Chain Guard - Lower chain guard is mounted on bottom of roller frame and upper chain guard is mounted above roller frame to totally enclose drive chain.

Motor - 3/4 H.P. 230/460/3/60 open motor.

Speed Reducer - C-Face mounted heavy duty worm gear reducer.

Roller Speed - 60 FPM constant.

Capacity - Maximum load 150 lbs. per foot; maximum unit load 500 lbs. Not to exceed Load Capacity Chart.

Optional Equipment:

Floor Supports - Lower or higher supports are available. Minimum elevation 15 in. from floor to top of roller.

Ceiling Hangers - Threaded rods 8 feet long with locking nuts and mounting hardware. Other lengths are available.

Side Mounted Drive - Drive mounted to side of conveyor section. Minimum elevation - 6" from floor to top of roller. Specify side.

Roller Set Low - Tread rollers mounted low in 6 in. x 11 ga. painted formed steel channel to form 1 3/4 in. high guard rails.

Motor - Single phase, totally enclosed, explosion proof, etc. Other H.P. are available.

Roller Speed - Constant and variable roller speeds available.

Electrical Controls - Magnetic starters, push button stations, manual one direction and reversing drum switches and others.

Guard Rails - Adjustable channel, continuous channel, or solid steel guard rails available.

CDLR - Can be slave driven

30° CURVE					
Between Frame Width	Overall Bed Width	Conveying Surface Width	Outside Radius (OR)	Inside Radius (IR)	Weight (lbs.)
					Tapered Rollers
16"	19"	13"	75"	59"	206
18"	21"	15"		57"	214
20"	23"	17"		55"	222
22"	25"	19"		53"	230
24"	27"	21"		51"	239
26"	29"	23"		49"	246
28"	31"	25"	99"	71"	255
32"	35"	29"		67"	315
34"	37"	31"		65"	324
38"	41"	35"		61"	343
40"	43"	37"		59"	353

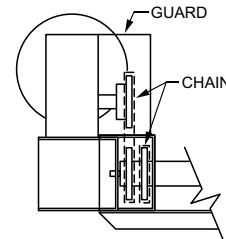
Note: Rollers based on 6" centers on outside rail

45° CURVE					
Between Frame Width	Overall Bed Width	Conveying Surface Width	Outside Radius (OR)	Inside Radius (IR)	Weight (lbs.)
					Tapered Rollers
16"	19"	13"	75"	59"	309
18"	21"	15"		57"	321
20"	23"	17"		55"	333
22"	25"	19"		53"	345
24"	27"	21"		51"	358
26"	29"	23"		49"	369
28"	31"	25"	99"	71"	382
32"	35"	29"		67"	473
34"	37"	31"		65"	486
38"	41"	35"		61"	515
40"	43"	37"		59"	529

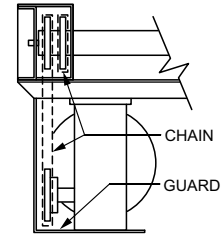
Note: Rollers based on 6" centers on outside rail

90° CURVE					
Between Frame Width	Overall Bed Width	Conveying Surface Width	Outside Radius (OR)	Inside Radius (IR)	Weight (lbs.)
					Tapered Rollers
16"	19"	13"	75"	59"	666
18"	21"	15"		57"	689
20"	23"	17"		55"	716
22"	25"	19"		53"	737
24"	27"	21"		51"	764
26"	29"	23"		49"	945
28"	31"	25"	99"	71"	972
32"	35"	29"		67"	1030
34"	37"	31"		65"	1058
38"	41"	35"		61"	1116
40"	43"	37"		59"	1176

Note: Rollers based on 6" centers on outside rail



TOP MOUNTED DRIVE (OPTIONAL)



UNDER HUNG DRIVE (STANDARD)

How To Order

Model: XXXXXXX-XX-XXX-XX-XXXX-XXX-XXX-XX-XX-XXX-XX

Model / Series: _____

Chain Driven Live Roller: (CDLR202, CDLR251, CDLR267, CDLR350)

Chain Driven Live Roller Curve: (CDC202, CDC251, CDC267)

Between Frame widths (inches): _____

CDLR202 & CDC202: (16, 18, 20, 22, 24, 26, 28, 32, 34, 38, 40)

CDLR251, CDC251, CDLR267, CDC267: (19, 21, 23, 25, 27, 31, 33, 37, 39, 43, 47, 51)

CDLR350: (27, 31, 35, 39, 43, 47, 51, 55)

Tread Roller Diameter: _____

(202) = 2" Dia. (CDLR202, CDC202 Only)

(251) = 2 1/2" Dia. (CDLR251, CDC251-Only)

(267) = 2 5/8" Dia. (CDLR267, CDC267 -Only)

(350) = 3 1/2" Dia. (CDLR350, CDC350 -Only)

Tread Roller Centers: _____

(60) = 6" Centers (CDLR202, CDC202, CDLR251, CDC251, CDLR267, CDC267- Only)

(75) = 7 1/2" Centers (CDLR251, CDC251, CDLR267, CDC267, CDLR350- Only)

(80) = 8" Centers (CDLR202, CDC202 -Only)

(100) = 10" Centers (CDLR251, CDC251, CDLR267, CDC267, CDLR350 - Only)

(120) = 12" Centers (CDLR202, CDC202, CDLR251, CDC251, CDLR267, CDC267, CDLR350 - Only).

(150) = 15" Centers (CDLR251, CDC251, CDLR267, CDC267 - Only)

Overall conveyor length: _____

Refer to length selection table

(ex: 0800)= 8'-0"

Paint color

(01) Blue, (02) Crème, (03) Safety Yellow, (04) Safety Orange, (05) Med. Metallic Grey, (06) White, (07) Dark Blue

Drive position:

(NDR) No Drive Required

(DLU) Left Hand, Mounted Low (Included in std. prc)

(DRU) Right Hand, Mounted Low (Included in std. prc)

(DLH) Left Hand, Mounted High (Add to std. price)

(DRH) Right Hand, Mounted High (Add to std. price)

(DLS) Left Hand, Side Mount (Add to std. price)

(DRS) Right Hand, Side Mount (Add to std. price)

Denotes horse power requirements:

(05) 1/2 HP (Included in Standard pricing)

(75) 3/4 HP (Add to std. price)

(10) 1 HP (Add to std. price)

(15) 1 1/2 HP (Add to std. price)

(20) 2 HP (Add to std. price)

(30) 3 HP (Add to std. price)

Denotes F.P.M. (Feet Per Minute)

requirements Std. 60 F.P.M.

(Selection from 30 F.P.M. to 200 F.P.M. in

increments of 10 F.P.M.)

Guiding:

(NGS) = No guides required

(STD) = Formed guides

** For special guiding please reference Conveyor

Accessories catalog for part number

Supports:

(Top of Bed / Top of Roller height)

(STD) = Standard supports 31 1/2" to 43 1/2"

(NSP) = No supports required

** If not standard please use top of bed / top of roller

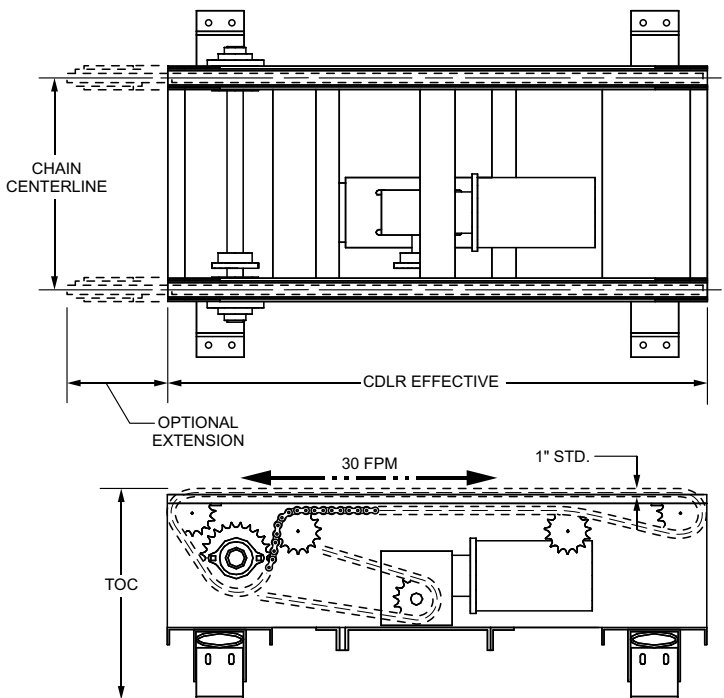
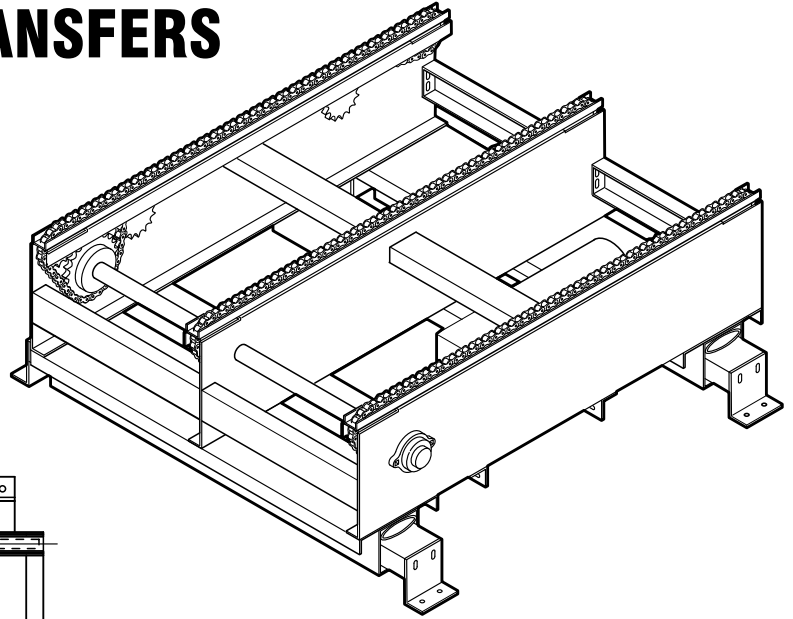
height dimensionally (ex: (12) = 1'-0" or (046) = 3'-10")

How To Order

HEAVY DUTY CHAIN TRANSFERS

Applications

- Transferring Products 90° onto Adjacent Conveyor
- Ideal for Pallets or Other Products with a Sturdy conveying Surface



Max. Capacity	Chain Type	Chain Track	Min. Top of Chain	Min. Roller Center (at Chains)	Horse Power
500 lbs.	C50	UHMW	15"	1.9 in. dia. = 4 3/8 in. 2 1/2 in. dia. = 5 5/16 in.	1/2
1500 lbs.	C60	UHMW	16"	2 1/2 in. dia. = 6 in. 3 1/2 in. dia. = 7 1/2 in.	1/2
2000 lbs.	C60	UHMW	16"	2 1/2 in. dia. = 6 in. 3 1/2 in. dia. = 7 1/2 in.	3/4
3000 lbs.	C80	UHMW	18"	2 1/2 in. dia. = 6 3/4 in. 3 1/2 in. dia. = 7 1/2 in.	1
4000 lbs.	C80	STEEL	19"	2 1/2 in. dia. = 6 3/4 in. 3 1/2 in. dia. = 7 1/2 in.	2
6000 lbs.	C100	STEEL	24"	3 1/2 in. dia. = 8 1/2 in. 4 in. dia. = 9 in.	3
8000 lbs.	RC120	STEEL	32"	3 1/2 in. dia. = 8 1/2 in. 4 in. dia. = 9 in.	5

Standard Specifications:

Frame - Heavy Duty welded construction.

Chain Track - UHMW polyethylene on C50, C60 and C80 sizes (up to 3000 lbs.) provides wear resistance, quiet operation and reduces power requirements. Special alloy steel track on C80 (3000 lbs. and up). C100 and RC120 sizes for increased load capacity.

Conveying Chain - Easi uses "C" series, straight side-bar chain on sizes C50 thru C100. This flat plate chain reduces product damage and wear compared to traditional roller chain. V-belts and flat belts are available for non-marring applications or table top chains.

Lift - Simple, maintenance-free air bags are pre-plumbed to a common air connection. Heavy duty cams are available to accommodate level lifting of special products.

Drive - Center-mounted drive allows chain travel to be reversed. Drive and pinch points are guarded.

Options:

- Limit switches
- Single solenoid valves
- Three or more chain stands
- Many other options also available

HEAVY DUTY CHAIN TRANSFERS

BUILT TO YOUR SPECIFICATIONS

Dillin offers custom chain transfers built to your specific requirements. We can handle your tough material handling applications.

Pivot Chain Transfer

Features

- 6 in. Pitch Chain
- Six 16 in. dia. Air Bags
- 20 in. Top of Chain
- Fork Entrance Guides

Reversible Six-Strand Chain Transfer

Features

- 6 1/2 in. dia. Rollers
- Pop-Up CDLR Conveyors
- RC120 Conveying Chain



— *Dillin Automation Systems Corp.* —
Creating Optimal Solutions

8030 Broadstone Road
Perrysburg, Ohio 43551

P. 419-666-6789
F. 419-666-4020
www.dillinautomation.com