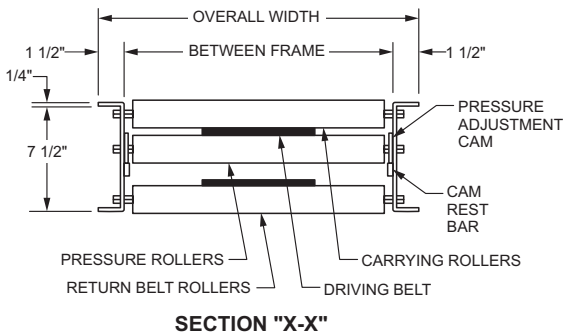
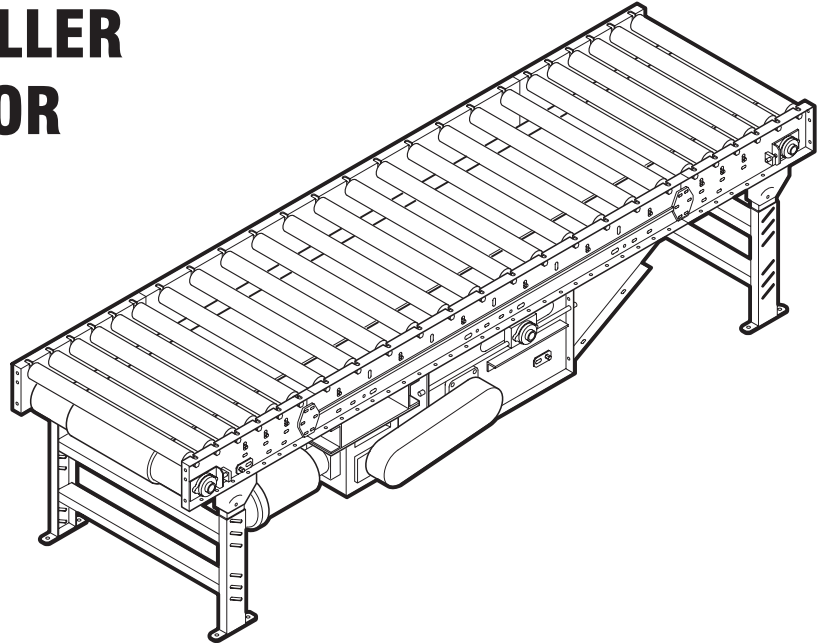


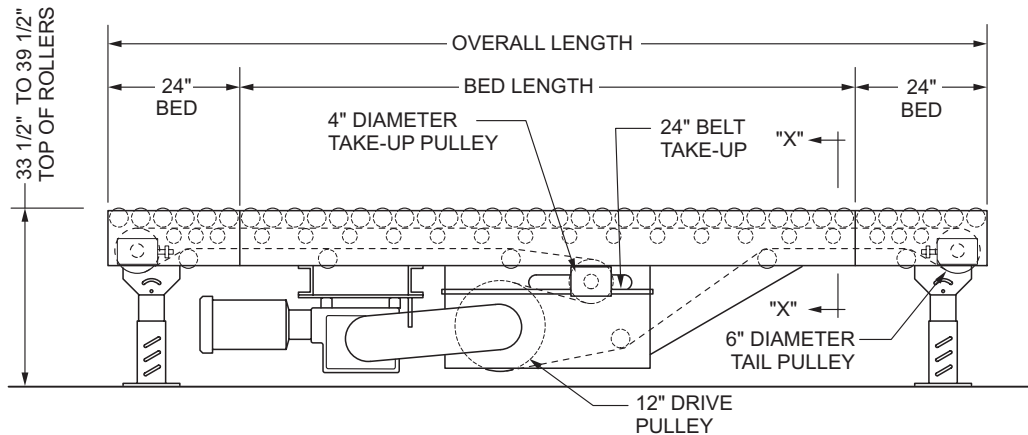
BELT DRIVEN LIVE ROLLER HEAVY DUTY CONVEYOR MODEL BDLR251 & BDLR267

Applications

- Heavy Duty Conveying
- Limited Accumulation
- Rugged Design
- Easy Installation and adjustment



LOAD CAPACITY CHART							
30 FPM Roller Speed							
Diameter Drive Pulley	HP	B/F WIDTH 27" to 31"		B/F WIDTH 33" to 51"		B/F WIDTH 57" to 61"	
		50' OAL	100' OAL	50' OAL	100' OAL	50' OAL	100' OAL
12"	2	8000 lbs.	6000 lbs.	600 lbs.	--	5000 lbs.	--
16"	3	15000 lbs.	12000 lbs.	12000 lbs.	8000 lbs.	12000 lbs.	6000 lbs.
	5	18000 lbs.	17000 lbs.	17000 lbs.	12000 lbs.	16000 lbs.	11000 lbs.



Standard Specifications:

Driving Belt - Solid woven black PVC belt FS x FS.

Bed - Roller bed width between rails, 27 in., 31 in., 33 in., 39 in., 45 in., 51 in., 57 in., and 61 in. 7 1/2 in. x 1 1/2 in. x 7 ga. formed steel channel frame, bolted together with butt couplings and floor supports.

Tread Rollers - 2 1/2 in. dia. x 11 ga. or 2 5/8 in. dia. x 7 ga., both with 11/16 in. hex shafts mounted on 3 in., 4 in. or 6 in. centers. Safety pop-out design prevents damage to product or harm to personnel if caught between belt and tread roller.

Pressure Rollers - 1.9 in. dia. x 9 ga. steel pressure rollers. Spaced every 6 in., 8 in. or 12 in. centers.

Tail Pulley - 6 in. dia. crowned with 1 7/16 in. dia. shaft.

Drive Pulley - 12 in. dia. crowned and fully lagged with 1 15/16 in. dia. shaft.

Snub Rollers - 2 in. dia.

Floor Supports - Adjustable 33 1/2 in. to 39 1/2 in. on 5' 0" centers with knee braces.

Take-Up - Located in center drive, provides 24 in. of belt take-up.

Motor - 1/2 H.P. 230/460/3/60 TEFC motor.

Speed Reducer - C-Face mounted heavy duty worm gear reducer.

Bearings - Sealed-prelubricated with cast iron housings.

Belt Speed - 30 FPM constant.

LR 267 WEIGHTS									
Overall Length	Belt Width	16"	16"	20"	20"	24"	24"	30"	30"
	Width Between Frames	27"	31"	33"	39"	45"	51"	57"	61"
	Overall Width	30"	34"	36"	42"	48"	54"	60"	64"
Rollers Spaced on 3 in. Centers									
14'		2520	2980	2920	3260	3630	4060	4510	5157
19'		3120	3400	3550	3610	4450	5000	5680	6411
24'		3760	3600	4150	4130	5210	5190	6750	7635
29'		4110	4160	4770	4870	6000	6800	7814	8900
34'		4660	4720	5380	5500	6780	7710	8890	10060
39'		5250	5320	5980	6120	7670	8610	10262	11300
44'		5750	5830	6590	6750	8300	9030	11766	12410
49'		6220	6320	7200	7480	9140	10450	11990	13530
54'		6690	6790	7810	8010	9840	11210	13020	14820
59'		6990	7220	8420	8640	10610	12170	14170	16240
64'		7680	8020	9010	9250	11440	13150	15030	17530
69'		8290	8600	9560	9820	12280	13970	16440	18670
74'		8790	9650	10150	10430	13020	14150	17380	20060
79'		9290	10230	10780	11180	13850	15880	18470	21470
84'		9890	10710	11370	11700	14550	16790	19480	22850
89'		10480	11400	11960	12300	15200	17670	20540	24250
99'		11170	10840	12510	12870	15940	18530	21540	25660

LR 251 WEIGHTS									
Overall Length	Belt Width	16"	16"	20"	20"	24"	24"	30"	30"
	Width Between Frames	27"	31"	33"	39"	45"	51"	57"	61"
	Overall Width	30"	34"	36"	42"	48"	54"	60"	64"
Rollers Spaced on 3 in. Centers									
14'		2320	2550	2660	2950	3390	3680	3850	4250
19'		2880	3090	3200	3560	4000	4330	4800	5270
24'		3220	3540	3710	4140	4630	5060	5640	6120
29'		3700	4050	4240	4750	5300	5810	6480	7090
34'		4180	4570	4760	5340	5960	6550	7330	7940
39'		4700	5080	5270	5930	6630	7280	8170	8890
44'		5130	5570	5790	6380	7240	7530	8480	9680
49'		5330	6040	6310	7010	7960	8770	9760	10500
54'		5930	6530	6820	7610	8540	9370	10570	11480
59'		6280	6990	7350	8300	9290	10160	11500	12600
64'		6780	7490	7850	8810	9900	10970	12130	13510
69'		7320	7970	8310	9390	10620	11620	13120	14420
74'		7750	8460	8810	10000	11240	12430	14030	15520
79'		8180	7960	9350	10660	11950	13190	14900	16610
84'		8710	9360	9850	11350	12540	13930	15690	17700
89'		9230	9970	10350	12080	13060	14640	16520	18780
99'		9780	10470	10810	12810	13680	15330	17300	19890

LR 267 WEIGHTS																
For Weights Other Than 3 in. Centers Deduct The following																
Roller Centers	27"	B.F.	31"	B.F.	33"	B.F.	39"	B.F.	45"	B.F.	51"	B.F.	57"	B.F.	61"	B.F.
4"	-92	-184	-107	-214	-113	-226	-131	-262	-153	-306	-176	-352	-195	-390	-207	-414
6"	-184	-368	-214	-428	-227	-454	-265	-530	-306	-612	-353	-706	-390	-780	-413	-828

LR 251 WEIGHTS																
For Weights Other Than 3 in. Centers Deduct The following																
Roller Centers	27"	B.F.	31"	B.F.	33"	B.F.	39"	B.F.	45"	B.F.	51"	B.F.	57"	B.F.	61"	B.F.
4"	-77	-154	-87	-174	-92	-184	-106	-212	-122	-244	-144	-288	-160	-320	-164	-328
6"	-154	-308	-173	-346	-183	-366	-212	-424	-243	-486	-288	-576	-320	-636	-329	-658

How To Order

Model: XXXXXXXX-XX-XXX-XX-XX-XXXX-XXX-XXX-XX-XX-XXX-XX

Model / Series:
 (BDLR138) Belt Drive Live Roller
 (BDLR196) Belt Drive Live Roller
 (BDLR251) Belt Drive Live Roller
 (BDLR267) Belt Drive Live Roller

Drive belt widths:
 (04) = 4" (BDLR138 Only)
 (08) = 8" (BDLR196 Only)
 (12) = 12" (BDLR 196 Only)
 (16) = 16", (20) = 20",
 (24) = 24", (30) = 30"

Tread Roller Diameter:
 (138) = 1 3/8" Dia. (BDLR138 Only)
 (196) = 1.9" Dia. (BDLR196-only)
 (251) = 2 1/2" Dia. (BDLR251 - BDLR267 Only)
 (267) = 2 5/8" Dia. (BDLR251 - BDLR267 Only)

Tread Roller Centers:
 (15) = 1 1/2" Centers (BDLR138 Only)
 (03) = 3" Centers
 (40) = 4" Centers (BDLR251 - BDLR267 Only)
 (45) = 4 1/2" Centers (BDLR196 Only)
 (60) = 6" Centers (BDLR251 - BDLR267 Only)
 (65) = 6 1/2" Centers (BDLR196 Only)

Pressure Roller Centers:
 (03) = 3" Centers (BDLR138 Only)
 (60) = 6" Centers
 (90) = 9" Centers
 (12) = 12" Centers

Overall conveyor length:
 Refer to length selection table
 (ex: (0800)= 8'-0")

Paint color
 (01) Blue, (02) Crème, (03) Safety Yellow,
 (04) Safety Orange, (05) Med. Metallic Grey,
 (06) White, (07) Dark Blue

Drive position:
 (DLU) Left Hand, Mounted Low (Included in std. prc)
 (DRU) Right Hand, Mounted Low (Included in std. prc)
 (DLH) Left Hand, Mounted High (Add to std. price)
 (DRH) Right Hand, Mounted High (Add to std. price)
 (DLC) Left Hand, Center Mount (Add to std. price)
 (DRC) Right Hand, Center Mount (Add to std. price)

Denotes horse power requirements:
 (05) 1/2 HP (Included in Standard pricing)
 (75) 3/4 HP (Add to std. price)
 (10) 1 HP (Add to std. price)
 (15) 1 1/2 HP (Add to std. price)

Denotes F.P.M. (Feet Per Minute) requirements. Std. 60 F.P.M.
 (Selection from 30 F.P.M. to 200 F.P.M. in increments of 10 F.P.M.)

Guiding:
 (NGS) = No guides required
 (STD) = Formed guides
 ** For special guiding please refer to guide catalog supplement for part number)

Supports:
 (Top of Bed / Top of Roller height)
 (STD) = Standard supports 31 1/2" to 43 1/2"
 (NSP) = No supports required
 ** If not standard please use top of bed / top of roller height dimensionally (ex: (12) = 1'-0" or (046) = 3'-10")

How To Order

Optional Equipment:

- Drive Pulley** - 16 in. dia. crowned and fully lagged with 2 15/16 in. dia. shaft.
- Floor Supports** - Lower or higher supports available. Minimum elevation 23 in. with 12 in. drive pulley and 25 in. with 16 in. drive pulley.
- Motor** - Single phase, totally enclosed, explosion proof, etc.
- Conveyor Speed** - Constant and variable belt speeds available.
- Electrical Controls** - Single direction or reversible magnetic starters and push buttons.
- Guard Rails** - Adjustable channel, continuous channel, or solid steel guard rails available.