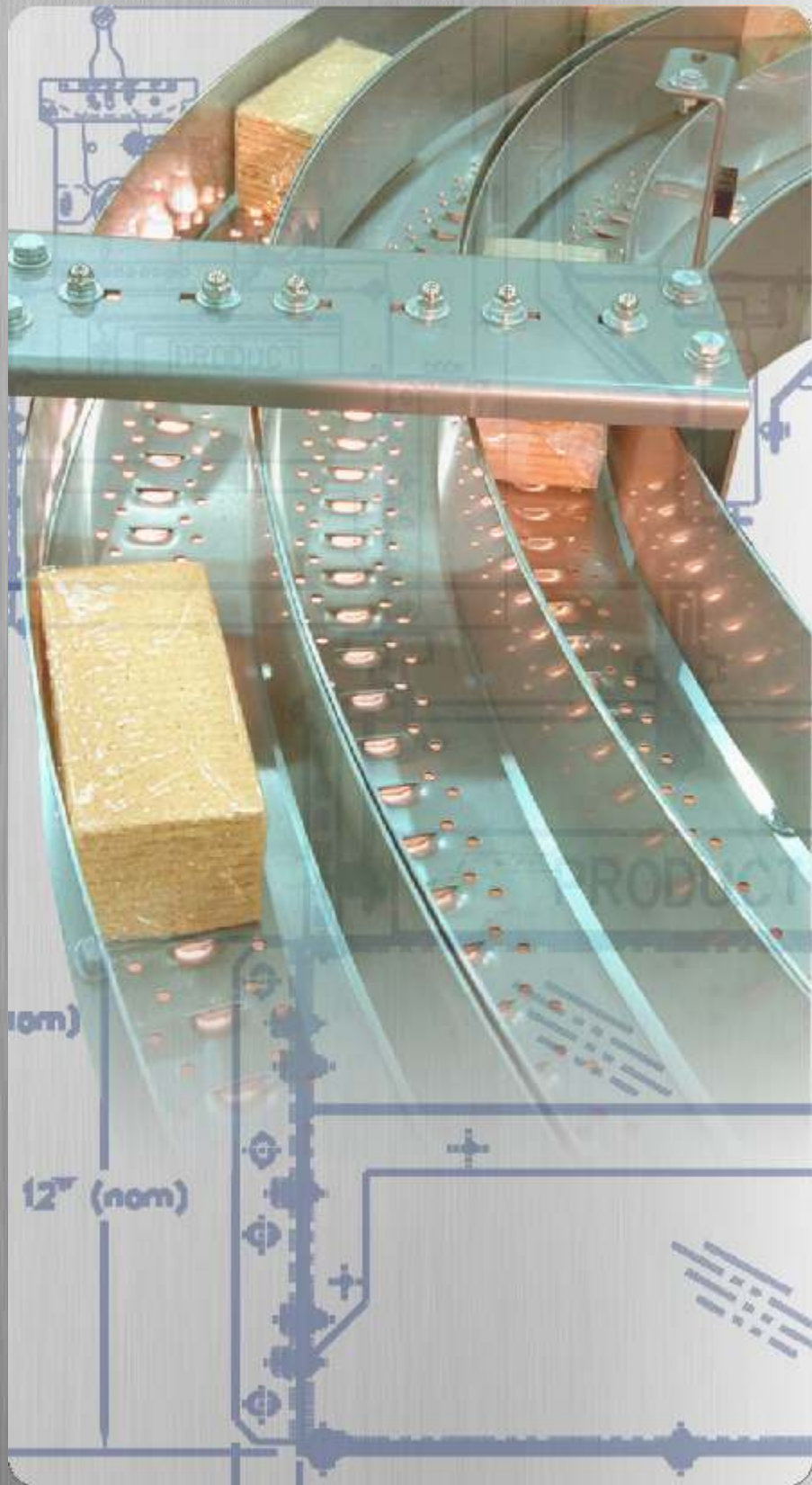


# AIR DECK®

*High Speed • Safe Accumulation*

**Dillin Automation**

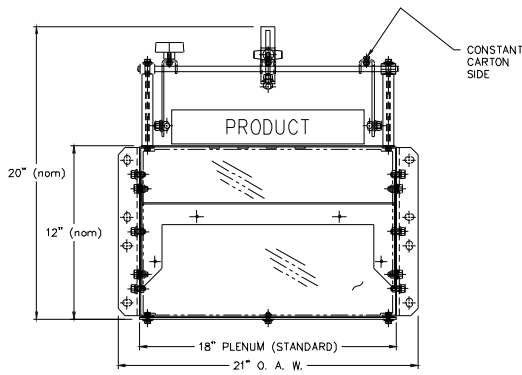
**S Y S T E M S C O R P**



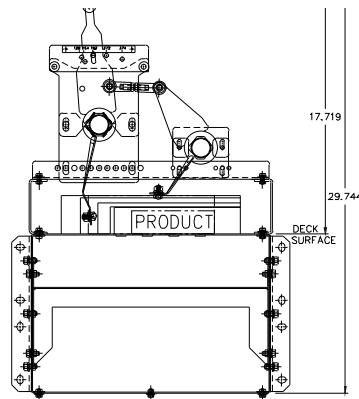


# ***AIR DECK***<sup>®</sup>

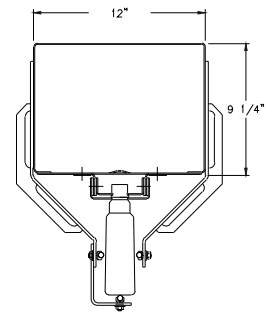
- **Cartons, candy, caps, pouches, bags, bottles**
- **Extremely low maintenance**
- **Low noise levels, safe, no moving parts**
- **High speed conveying for PET bottles**
- **Capable of rates from 200-1200 FPM**
- **Can provide accumulation during downstream machinery downtime**
- **Easy interface with upstream and downstream machinery**
- **Patented QuickSet<sup>®</sup> Guides make product changeovers in seconds**
- **Maximum accumulation with minimum line pressure and no scuffing**



TYPICAL CROSS SECTION  
CARTON SYSTEM AIR DECK®



TYPICAL CROSS SECTION  
CARTON SYSTEM AIR DECK® WITH QuickSet® GUIDES



TYPICAL CROSS SECTION  
PET BOTTLE SYSTEM AIR DECK®

## AIR DECK® SPECIFICATIONS

### CONSTRUCTION MATERIALS

Design.....Deck bolted onto plenum  
 Optional Design Element .....Plenum doors for inside access  
 Deck.....14 gauge 304 stainless steel  
 Frame.....14 gauge mild steel, painted, bolted construction  
 Optional frame.....All 304 stainless steel  
 Joints.....Sides are formed angle, bottom is flat plate

### MATERIAL FINISH

Finish.....Frame; painted, air dry enamel  
 Deck, Stainless steel 2B finish

Optional Finish... ..To customer specification

### GUIDES

Side Guide Rails.....Adjustable stainless steel, 3/8"  
 round rod with brass bar lock

Side Guide Rail Brackets.....Formed brackets,  
 Bright nickel plated

Overhead Guide Rails.....Adjustable, stainless steel  
 3/8" round rod with brass bar lock

QuickSet® Guides.....See QuickSet® Guide catalog sheet

### CONVEYOR BED

Size.....12" or 18" overall plenum width per lane  
 Optional Size.....multi-lane, width to customer specification

Deck Pattern.....Designed to product requirement

Curves.....12" plenum width  
 3'-0" inside radius; 30°, 45°, or 90° angle

Curves.....18" plenum width  
 (A) 2'-6" inside radius; 30°, 45°, or 90° angle  
 (B) 4'-0" inside radius; 30° or 45° angle

Optional.....Angles and radius to customer specification

Curve Guide Rails.....3" high stainless steel sheet  
 guide rail on outside radius

### DIMENSIONS/WEIGHT

Plenum Width.....12" or 18"

Plenum Height.....12"

Length.....10 feet maximum per section

Weight.....Approximately 200 lbs. per foot section

Optional Width, Height & Length.....To customer specification

### SUPPORTS

Floor.....Adjustable, formed channel

Optional Floor Supports.....Clean design, or Pedestal style

Overhead.....Side mounted, formed angle brackets

### SPEED

Normal Range.....200-1200 FPM

### CAPACITY

Horizontal.....Maximum weight 1 oz. per square inch  
 of product surface. NOTE: All systems subject to  
 product testing by Dillin Engineered Systems Corp.

### BLOWER SYSTEM

Blower.....Direct drive Reliance motor, TEFC  
 Optional Blower.....Belt drive Reliance motor, TEFC

Dillin designed motor mount and guarding

Fan.....New York or Chicago Corp. Model: Airfoil  
 SQAD High Efficiency

Filter.....Aluminum mesh, washable

Magnehelic.....Dwyer magnehelic pressure gauge

Blower Transition.....Steel construction

Optional Blower Transition.....Flexible fabric connection

Baffles.....Steel fins for air control

### UTILITIES

Motor Power Requirement.....230/460V-60 Hz-3 PH

Optional Electrical Devices.....24VDC

Optional Pneumatic Field Devices.....Compressed air  
 minimum 80 PSI

### FIELD DEVICES - Dillin standards where applicable

Electrical.....Photoeyes (Photo Switch)

.....Solenoid Valves (MAC),

.....Proximity Switches (Efcator)

.....Guard Door Sensors (Schmersal); Low Air Pressure

.....Sensors (Barksdale); Limit Switches (Allen-Bradley)

Pneumatics.....Filter/Regulator/Lubricator (Numatics)

.....Flow Control (Bimba); Poly Tube Fitting (Camozzi)

.....Mufflers (Allied)

### ADJUSTABILITY

Product.....Adjustable guide rails

Speed.....Damper controls, 10" deep, jalousie style

Optional Speed Control.....Damper controls, 4" deep, jalousie style

Optional Adjustment Devices.....Dillin designed devices for  
 indexing, lane changing, slowing and stopping products

### SAFETY EQUIPMENT

General.....No moving parts except in blower

Overhead Guide Rail.....Keeps product on conveyor

Blower Guards.....Triple guarding by filter,damper, and screen

Optional Safety Equipment.....Pre-wired motor

### SKIDDING/SHIPPING

Skidding.....AIR DECK® sections are stacked and bolted on  
 special metal shipping brackets

Optional Shipping.....Exclusive-Use Air Ride tractors  
 and trailers at competitive freight rates

### MAINTENANCE

Filters.....Clean periodically

Spare Parts.....Standard, readily available

### TYPICAL INTERFACE EQUIPMENT

Equipment.....Any type of conveyor system

Specifications subject to change without notice.

# Dillin Automation Systems

**“We Solve your Productivity Puzzle”**

With its subsidiaries: Dillin Engineered Systems, Dillin Control Systems and Dillin Capping Systems, DAS offers a wide variety of products and capabilities which can be custom tailored to solve your specific packaging line productivity problems.

DILLIN AUTOMATION SYSTEMS specializes in Accumulation and Conveying Technology, System Integration, Controls and Panel Building and Capping and Closure Solutions.

With a combined 60 plus years of experience, our Solution Proving Team can assist you with the most basic of applications or the “Packaging Line of Your Future”. . . today.

DAS is a member of PMMI and specializes in package handling to include unwrapped food, cartons, cups, bag and pouches, caps, PET containers, trays, cases and pallets.

Our technology pedigree includes the following patents: ROE-LIFT® Over-The-Top® Vertical Accumulators, AIR DECK®, QuickSet® Guides and Changeover System, Rwave® Transfer, and “Soft-Touch”® Low Line Pressure Accumulation.

Our knowledgeable sales persons, applications engineers, design engineers, project managers and highly qualified production technicians have a common goal . . . to help you, our valued client, take the puzzle out of your productivity challenges. We will do anything in our power to get you the solution you need and then stick with you in the years to come. . . because that’s how we both succeed!

